

Table of contents

Otology

• TubaVent® - Family.....	3
• TubaClean®	9
• Ventilation Tubes.....	13
• Middle Ear Implants / Middle Ear Instruments / Stapes Prostheses.....	21
• Silicone Sheeting.....	35
• Suction Tubes.....	37
• Ear Tampons	41

Rhinology

• Nasal Packings / Tampons	43
• Nasal Splints.....	49
• Silicone Sheeting / Catheter.....	55
• Suction Tubes.....	57
• ENT-Patties / Hydrocolloid Plaster.....	59

Surgical Motor Systems

• SpeedSurg / HighSpeed	61
• SpeedSurg / LowSpeed	69
• Miscellaneous Products.....	79

Bandages and Swabs

• Ear, Head, and Nasal Bandages	83
• Swabs.....	87

Sterile Covers

• For Microscopes.....	91
• For Mobile X-Ray Units (C-Arm/O-Arm).....	97
• For Cameras and Consoles.....	101

Lid Implants (Lid chain)

• Lid Implants and Test Weights	105
---------------------------------------	-----

Miscellaneous Products

• Silicone Sheeting, Suction Tubes, Headband, Cotton Wool Balls, Expanding Wipe	109
• VoicInject®	113
• APrevent® VOIS.....	119
• Trachealator.....	127
• MENTIO - Einmal-Instrumente.....	131

Otology

- **TubaVent[®] - Family**
- TubaClean[®]
- Ventilation Tubes
- Middle Ear Implants / Middle Ear Instruments / Stapes Prostheses
- Silicone Sheeting
- Disposable Suction Tubes
- Ear Tampons



Prof. Dr. med. habil. Matthias Tisch
Honorary Doctorate in Medicine
Jordan University of
Science and Technology (JUST),
Medical Director Clinic and
Polyclinic for Otolaryngology,
Head and Neck Surgery
Bundeswehr Hospital Ulm, Germany

» The **TubaVent® short**, in combination with the **TubalInsert®**, ensures a comfortable and reliable application and a safe and successful treatment. «

The **TubaVent® short** is a modified dilatation catheter, which in combination with the **TubalInsert®** insertion instrument allows for a precise and simple application.

The olive-shaped catheter tip also allows safe application where there are soft anatomical structures.



TubaVent® short and **TubaVent® short wide**

- Olive-shaped catheter tip facilitates easy advancement of the catheter
- Optimal balloon length ensures controlled dilation of the cartilaginous part of the Eustachian tube
- Simple and quick to apply system, especially when used in combination with the TubalInsert®.

Art. No. 2080-1236320 WL 236 mm, balloon 3.28 x 20 mm*, sterile

Art. No. 2080-12364520 WL 236 mm, balloon 4.94 x 20 mm*, sterile



* at 10 bar

This disposable instrument - **TubaInsert®** - combines the reliability of a reusable insertion instrument with the convenience and safety of modern disposable instruments.



Single-use insertion instrument, sterile

- Easier handling in confined anatomical conditions
- Three different geometries available
- Excellent tactile feedback during insertion of catheter into Eustachian tube
- No time-consuming processing steps needed



60° type Ulm, 10 pieces / box

2080-2010



45°, short bending, 10 pieces / box

2080-2045



70°, 10 pieces / box

2080-2070



Inflation pump

- Inflation pump with extension tube
- 30 ml syringe with lockable plunger and Luer-Lock connector
- Pressure gauge from 0 to 30 atm and PSI scale
- 50 cm extension tube
- Usable for all **TubaVent®** catheters
- Single-use

2080-9030040



Professor Dr. med. Dr. rer. nat.
Holger Sudhoff, FRCS, FRCPath
Kopfzentrum Bielefeld
Germany

» With the **dilatation of the Eustachian tube**, the possibility to treat the cause of chronic middle ear infections was offered for the first time. «

In combination with the reusable combined insertion instrument, the TubaVent can sustainably treat Eustachian tube dysfunction.

The available insertion angles allow adaptation to all encountered anatomical conditions.

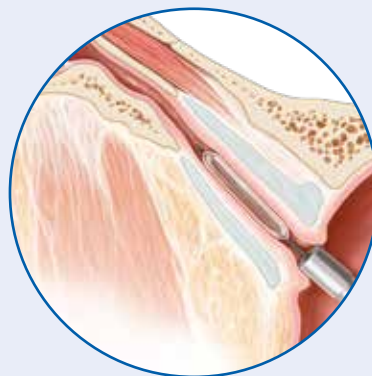


TubaVent® and TubaVent® wide

- Optimal balloon lengths ensure dilation of the cartilaginous part of the Eustachian tube
- Controlled dilatation

Art. No. 2080-1300320 WL 355 mm, balloon 3.28 x 20 mm*, sterile

Art. No. 2080-13004520 WL 355 mm, balloon 4.94 x 20 mm*, sterile



* at 10 bar



Combined Insertion Set, tapered, 3.0 mm

- three color-coded distal angled **tapered** attachments: 30°, 45°, 70°
- Combined Insertion instrument



80-806-83



80-806-84



80-806-85

80-806-91



Combined Insertion Set, tapered, 4.5 mm for TubaVent® wide

- three color-coded distal angled **tapered** attachments: 30°, 45°, 70°
- Combined Insertion instrument



80-807-83



80-807-84



80-807-85

80-807-92



System screen basket for combined insertion sets

- For combined insertion instrument and attachments
- With cover, retaining strap and silicone strips
- Rinsing module for cleaning the inner lumen
- Material: Stainless steel
- Dimensions: 24.4 cm x 24.4 cm
- Validated Cleaning System

80-850-10

Otology

- TubaVent® - Family
- **TubaClean®**
- Ventilation Tubes
- Middle Ear Implants / Middle Ear Instruments / Stapes Prostheses
- Silicone Sheeting
- Disposable Suction Tubes
- Ear Tampons

The probing and flushing catheter for the Eustachian tube



Prof. Dr. med. Götz Lehnerdt, Chief Doctor,
Cellitinnen-Krankenhaus St. Petrus,
Wuppertal, Germany

» This catheter gives us surgeons an option for probing and flushing the Tuba Eustachii in an atraumatic way from the middle ear during surgery. «

Chronic ventilation problems may result in retraction, cholesteatoma, or not-healing eardrum defects. Particularly in children, tympanic effusion, often with a mucous discharge (so-called "glue ear"), may also occur.

As many users of balloon dilation have described, such viscous secretion is frequently found within the Tuba Eustachii as well. In analogy, this is referred to using the term "glue tube".

Indications

- Tuba Eustachii dysfunction
- Mucous otitis media
- Chronic mesotympanic otitis media with possible eardrum defects
- Chronic epitympanic otitis media (possibly in connection with cholesteatoma development)
- Detritus in the Eustachian tube e.g. after middle ear surgery
- Cleaning after drilling at the middle ear



Distal catheter portion (olive shape) in the nasopharynx

TubaClean®

Advantages:

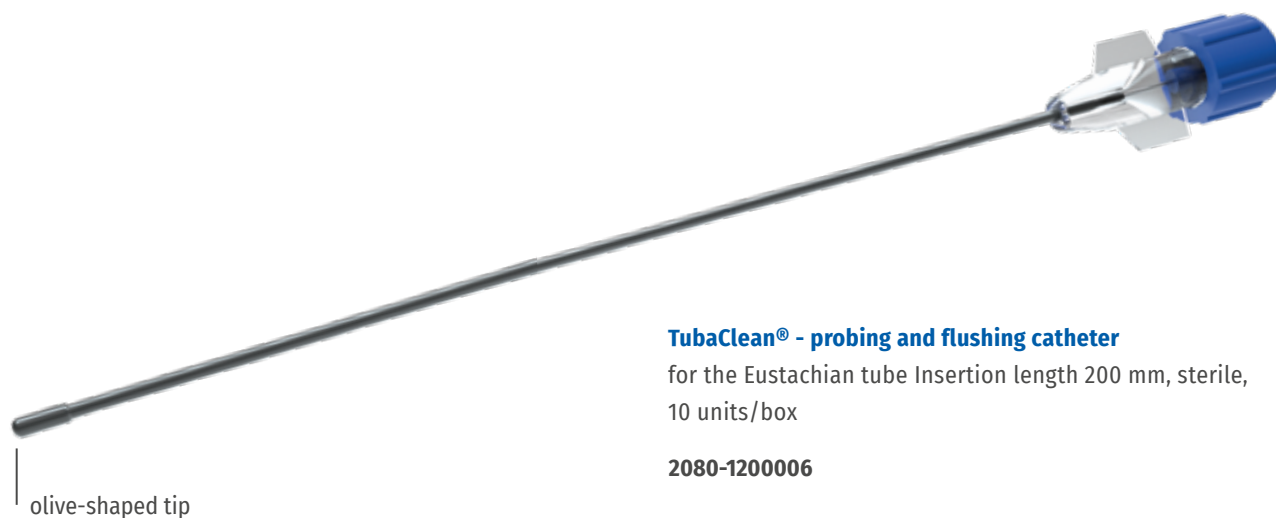
- Checking the Tuba Eustachii for blockage from the situs of the ear
- Cleaning after drilling work at the middle ear
- Removal of mucus from the Tuba Eustachii
- Enhanced insight into the middle ear with surgical measures in the course of tympanoplasty I to III or tympanoscopy

Procedure

- Localising the tympanal tubal ostium
- The catheter is pushed forward into the lumen of the Tuba Eustachii
- After pushing forward for about 15 mm, the mandrel is removed to allow easier progress beyond the tubal isthmus
- The catheter is slowly retracted while at the same time flushing the tube or administering cortisone

Features & Benefits

- Atraumatic olive-shaped tip prevents puncturing of the mucosa
- High stiffness when inserting the catheter due to an internal mandrel
- After removing the mandrel, there is high flexibility so that the catheter can be optimally pushed through the curves and isthmus of the Tuba Eustachii
- A Luer-Lock adapter allows easy and safe administration of liquids
- Improved ventilation enables quicker recovery



TubaClean® - probing and flushing catheter

for the Eustachian tube Insertion length 200 mm, sterile, 10 units/box

2080-1200006

Otology

- TubaVent® - Family
- TubaClean®
- **Ventilation Tubes**
- Middle Ear Implants / Middle Ear Instruments / Stapes Prostheses
- Silicone Sheeting
- Disposable Suction Tubes
- Ear Tampons

Ventilation tubes



Today, there is a wide range of different models in **various materials**. It is not easy for the user to make a choice, particularly as many **types** are very **similar**. Personal experience and preferences play an important role in the decision making process. At SPIGGLE & THEIS you will find the ventilation tubes you are looking for.



Titanium

- Lumen and flanges are micro-polished to prevent adhesions of secretion
- Especially light



Silicone

- Soft material, which can be easily finished if necessary



Fluoroplastic (PTFE)

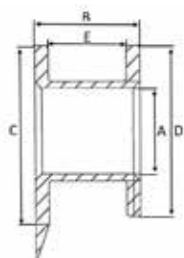
- Adhesive material properties prevent too fast closure of the tube

All our ventilation tubes are **biocompatible** and provide excellent drainage results. The ventilation tubes come in single and sterile packaging.

There are three categories to differentiate between:

- Duration **“short”** (e.g. Shepard): approx 1-6 months
- Duration **“medium”** (e.g. collar button): approx 6-12 months
- Duration **“long”** (e.g. T-tube): approx 12 months or longer; must be removed by a physician

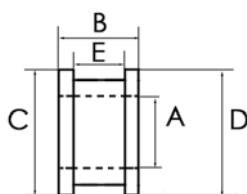
Titanium



Self cutting, 10 pieces / box, sterile

- Typical medium-term ventilation tube
- Time-saving, separate myringotomy blade is no longer needed
- Easy positioning
- Familiar collar button design

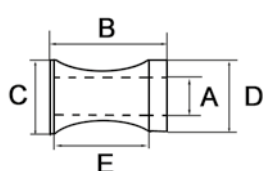
Art.-No.	Feature	(A) Inner Ø (mm)	(B) Length (mm)	(C) Inner edge Ø (mm)	(D) Outer edge Ø (mm)	(E) Edge distance (mm)
10125SC	cutting edge	1.25	1.55	2.5	2.5	1.15



Collar button, 10 pieces / box, sterile

- Standard medium-term ventilation tube
- Classic design

Art.-No.	Feature	(A) Inner Ø (mm)	(B) Length (mm)	(C) Inner edge Ø (mm)	(D) Outer edge Ø (mm)	(E) Edge distance (mm)
10076		0.76	1.49	1.57	1.97	1.01
10100		1.00	1.55	2.25	2.25	1.15
10100F	with wire	1.00	1.55	2.25	2.25	1.15
10125		1.25	1.55	2.50	2.50	1.15
10125F	with wire	1.25	1.55	2.50	2.50	1.15
10150		1.50	1.55	2.75	2.75	1.15
10150F	with wire	1.50	1.55	2.75	2.75	1.15



Shepard, 10 pieces / box, sterile

- Short-term ventilation tube
- Classic design

Art.-No.	Feature	(A) Inner Ø (mm)	(B) Length (mm)	(C) Inner edge Ø (mm)	(D) Outer edge Ø (mm)	(E) Edge distance (mm)
101100		1.00	2.20	2.50	2.50	1.30
101100F	with wire	1.00	2.20	2.50	2.50	1.30
101125		1.25	2.20	2.50	2.50	1.30
101125F	with wire	1.25	2.20	2.50	2.50	1.30

Otology

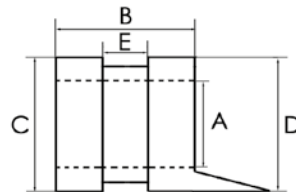
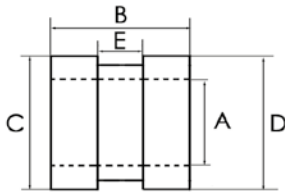
Ventilation tubes

Silicone



Donaldson, 10 pieces / box, sterile

- Short-term and medium-term ventilation tube
- Flange design prevents migration and extrusion
- Also available with tab for easier insertion and removal



Art.-No.	Feature	(A) Inner Ø (mm)	(B) Length (mm)	(C) Inner edge Ø (mm)	(D) Outer edge Ø (mm)	(E) Edge distance (mm)
103000		1.14	2.20	2.40	2.40	0.80
103010	with tab	1.27	2.10	2.90	2.90	1.40



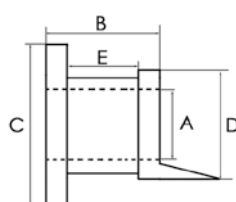
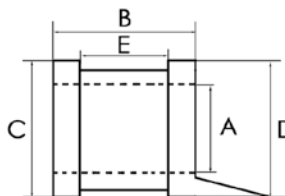
Typ I



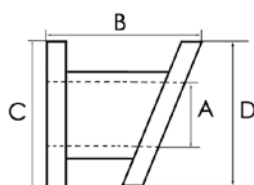
Typ II

Paparella I+II, 10 pieces / box, sterile

- Medium-term ventilation tube
- Notched inner flange is designed for easier insertion in a smaller incision
- Two different sizes available
- With tab for easier insertion and removal



Art.-No.	Feature	(A) Inner Ø (mm)	(B) Length (mm)	(C) Inner edge Ø (mm)	(D) Outer edge Ø (mm)	(E) Edge distance (mm)
103300	Typ I	1.14	2.20	2.40	2.10	1.10
103310	Typ II	1.42	2.20	4.40	2.70	1.10

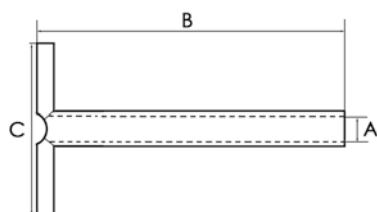
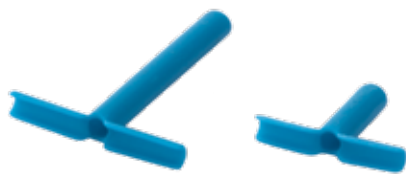


Armstrong, 10 pieces / box, sterile

- Medium-term ventilation tube
- Bevelled inner flange corresponds to the angle of the tympanic membrane

Art.-No.	Inner Ø (mm)
103400	1.10

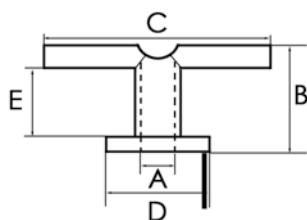




T-Tube, 10 pieces / box, sterile

- Long-term ventilation tube
- Shafts and flanges can be partly shortened
- Soft flanges open out after insertion into ear drum
- Opened flanges prevent premature loss
- Proven and popular design

Art.-No.	(A) Inner Ø (mm)	(B) Length (mm)	(C) Inner edge (mm)
103100	1.14	12.0	9.83
103150	1.14	4.8	7.90



Grommet T-Tube, 10 pieces / box, sterile

- Long-term ventilation tube
- With integral tab for ease of insertion and removal
- Soft flanges open out after insertion into ear drum
- Opened flanges prevent premature loss

Art.-No.	Feature	(A) Inner Ø (mm)	(B) Length (mm)	(C) Inner edge (mm)	(D) Outer edge (mm)	(E) Edge distance (mm)
103200	with tab	1.27	3.50	6.40	3.80	2.40

Fluoroplastic (PTFE)



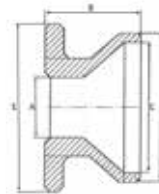
Reuter Bobbin



Bevel Bobbin

Reuter Bobbin and Bevel Bobbin, 10 pieces / box, sterile

- Medium-term ventilation tube

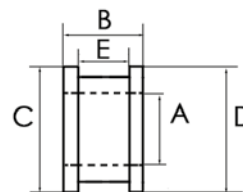


Art.-No.	Type	Material	(A) Inner Ø (mm)	(B) Length (mm)	(C) Inner Ø (mm)	(D) Inner edge Ø (mm)	(E) Outer edge Ø (mm)
104311	Bevel	Fluoroplastic	1.10	1.8	2.4	2.75	3.1
104414	Reuter	Fluoroplastic	1.14	1.5		2.8	2.8



Collar button, 10 pieces / box, sterile

- Medium-term ventilation tube
- Proven and popular design
- Three different inner diameters

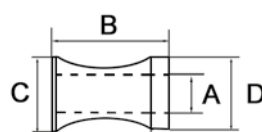


Art.-No.	Feature	(A) Inner Ø (mm)	(B) Length (mm)	(C) Inner edge Ø (mm)	(D) Outer edge Ø (mm)	(E) Edge distance (mm)
104100		1.00	2.1	2.70	2.70	1.3
104100F	with wire	1.00	2.1	2.70	2.70	1.3
104125		1.25	2.1	2.95	2.95	1.3
104125F	with wire	1.25	2.1	2.95	2.95	1.3
104150		1.50	2.1	3.20	3.20	1.3
104150F	with wire	1.50	2.1	3.20	3.20	1.3



Shepard, 10 pieces / box, sterile

- Short-term ventilation tube
- Proven and popular design



Art.-No.	Feature	Material	(A) Inner \varnothing (mm)	(B) Length (mm)	(C) Inner edge \varnothing (mm)	(D) Outer edge \varnothing (mm)
104115		Fluoroplastic	1.15	2.4	2.4	2.4
104115F	with wire	Fluoroplastic	1.15	2.4	2.4	2.4



Shah, 10 pieces / box, sterile

- Medium-term ventilation tube
- Wedge shaped inner flange for easier insertion



Art.-No.	Feature	Material	(A) Inner \varnothing (mm)	(B) Length (mm)	(C) Inner edge \varnothing (mm)	(D) Outer edge \varnothing (mm)	(E) Edge Distance (mm)
104200	with tab	Fluoroplastic	1.14	2.70	2.36	2.36	1.78
104210		Fluoroplastic	1.14	2.54	2.36	2.36	1.64

Insertion instruments for ventilation tubes



Universal ventilation tube inserter

- With irrigation channel
- Non-sterile

10-758-00



Hartmann ear forceps

- Serrated
- Self-closing
- Straight
- 0.8 x 4.0 mm
- 8 cm
- Non-sterile

10-701-00



Ventilation tube inserter with mandrels

- Inserter for plastic ventilation tubes
- One each mandrel for ventilation tubes with 1.00 mm and 1.2 mm diameter
- Non-sterile

10-759-00



T-tube inserter

- For T-tubes 6, 9 and 12 mm length
- Non-sterile

Art.-No.	Feature
10-760-00	Dismountable
1316012	Non-dismountable

If you cannot find your model of preference, please contact your SPIGGLE & THEIS distributor.

Otology

- TubaVent® - Family
- TubaClean®
- Ventilation Tubes
- **Middle Ear Implants / Middle Ear Instruments / Stapes Prostheses**
- Silicone Sheeting
- Disposable Suction Tubes
- Ear Tampons

Middle Ear Implants



PD Dr. med. Carsten V. Dalchow
Head of the Department of
Otolaryngology, Head and Neck Surgery,
Plastic Surgery and Allergology
Hospital Frankfurt Höchst, Germany

» Titanium is characterized by its high **biocompatibility** and **stability** combined with high rigidity and low weight. «

According to Wullstein (1968), tympanoplasty requires a constant assessment of the present situation, each of which requires a special solution. One of the great challenges is reconstructing a broken or fixed ossicular chain to restore optimal

hearing. Since the dawn of middle ear surgery, a variety of materials have been used. An ever-advancing development in materials technology has led to the use of titanium since 1994.

Total implant, fixed length, titanium, shaft Ø 0.3 mm, sterile

Advantages:

- Manufactured from one single piece
- Excellent stability and handling
- Large choice of lengths
- Adjustable head angle
(exception: 3 mm length implants)



Oval-excentric head

Art.-No.	Length (mm)
11830	3.00
11835	3.50
11840	4.00
11842	4.25
11845	4.50
11847	4.75
11850	5.00
11855	5.50
11860	6.00
11865	6.50
11870	7.00



Round-centric head

Art.-No.	Length (mm)
11930	3.00
11935	3.50
11940	4.00
11942	4.25
11945	4.50
11947	4.75
11950	5.00
11955	5.50
11960	6.00
11965	6.50
11970	7.00

Titanium is distinguished from all other materials used so far by its high biocompatibility and stability with high rigidity and low weight. By a simple individual adjustment in length and angle partial and total prosthesis can be ideally adapted to any anatomical situation. This middle ear implant system made of pure titanium has been able to provide the young as well as experienced otologist with a tool to safely replace destroyed ossicles and to reproduce the patient's lost hearing.

Partial implant, fixed length, titanium, shaft Ø 0.3 mm, sterile

Partial implant designs with slitted bells provide the option of placing the implant on the complete bow of the stapes sides when the stapes head is no longer there. This placement reduces the risk of implant dislocation. The implant head can be either centrally (round head) or eccentrically

(oval head) attached to the implant shaft.

The oval headed version has an additional groove for an improved fitting of the malleus. A clearer view for positioning the bell end is possible due to openings found in both versions.

Advantages:

- Manufactured from one single piece
- Optimal positioning on the stapes head
- Large choice of lengths
- Different dimensions available

- Round-centric head or oval-excentric head with additional groove
- Complete bell or bell with slits
- Excellent stability and handling



Round-centric head with slitted bell

Art.-No.	Insert length (mm)
12705	0.50
12710	1.00
12712	1.25
12715	1.50
12717	1.75
12720	2.00
12722	2.25
12725	2.50
12730	3.00
12735	3.50

Oval-excentric head with slitted bell

Art.-No.	Insert length (mm)
12805	0.50
12810	1.00
12812	1.25
12815	1.50
12817	1.75
12820	2.00
12822	2.25
12825	2.50
12830	3.00
12835	3.50

Round-centric head with complete bell

Art.-No.	Insert length (mm)
12905	0.50
12910	1.00
12912	1.25
12915	1.50
12917	1.75
12920	2.00
12922	2.25
12925	2.50
12930	3.00
12935	3.50

Implants with variable length

- Advantage:**
- Shaft can be shortened to required length in 1 mm intervals



Total implant, shortenable, shaft Ø 0.4 mm, sterile

- Two parts (shaft with head and separate shoe)
- No sharp ends

Art.-No.	Material	Overall Length (mm)
11100	titanium	2.8 - 7.8
11200	titanium	2.3 - 7.3



Total implant, shortenable, shaft Ø 0.4 mm, sterile

- Adjustable head
- Two pieces (shaft with head and separate shoe)

Art.-No.	Material	Overall Length (mm)
11500	titanium	2.8 - 7.8
11600	titanium	2.3 - 7.3



Total implant, shortenable, shaft Ø 0.3 mm, sterile

- Two pieces (shaft with shoe and separate head)
- Reduction in weight due to 0.3 mm shaft diameter

Art.-No.	Material	Overall Length (mm)
11300	titanium	3.5 - 7.5
11400	titanium	3.0 - 7.0



Advantage:

- Shaft can be shortened to required length in 1 mm intervals

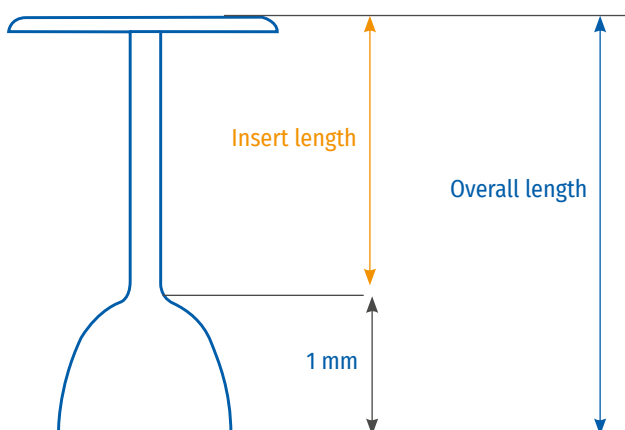


Partial implant, shaft Ø 0.3 mm, sterile

- Two pieces (shaft with bell and separate head)
- Reduction in weight due to 0.3 mm shaft diameter

Art.-No.	Material	Overall Length (mm)
12100	titanium	2.5 - 5.5
12200	titanium	2.0 - 5.0

Insert length / Overall length



ATTENTION:

Insert length = Overall length - 1 mm

Shortening instruments for titanium middle ear implants



Basic block
for shortening scales (total and partial implants)

PF001-10



Shortening scale for use with the basic block
for total implants 11100, 11200, 11500, 11600

PF001-11

Shortening scale for use with the basic block
for partial implants 12100, 12200

PF001-12

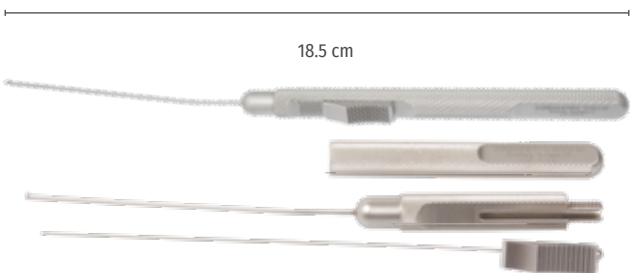
Shortening scale for use with the basic block
for total implants 11300, 11400

PF001-13



Shortening forceps with extra strong jaw
1.4 x 4.0 mm, 8 cm

10-715-00



Reference Instrument for middle ear prostheses
slide button control from 0-8 mm, 18.5 cm

Art.-No.	Description
10-651-00	Non-Dismountable
10-652-00	Dismountable

Instruments for otological microsurgery



Hartmann ear forceps

- Serrated and fine
- Self-closing
- straight
- 0.8 x 4.0 mm
- 8 cm

10-701-00



Helms, dressing forceps

- Straight, anatomical
- 2.8 mm
- 15 cm

10-489-15



Hildmann, cartilage forceps

- Straight
- 11 cm

10-504-10

Please see our otological instrument catalog for the complete range of our otological instruments.

Prof. Wollenberg Titanium Ear Instrument Set

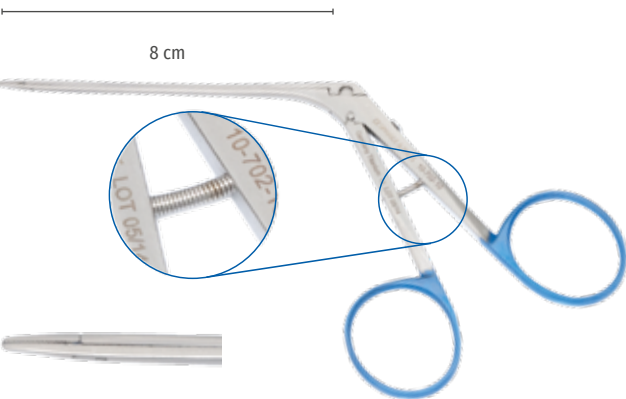


Prof. Dr. med. B. Wollenberg
Director of the clinic and polyclinic for
ear, nose and throat medicine,
Chair of Otorhinolaryngology at the
Technical University Munich (TUM),
Germany

» Vibrant Soundbridge (VSB) implantation is well established in the surgical treatment of sensorineural as well as combined hearing loss in e.g. revision middle ear surgery or complex atresia cases. «

„Coupling the VSB to existing anatomical structures can be greatly facilitated using non magnetic Titanium instruments. With the help of the presented instruments frequently used during such operations,

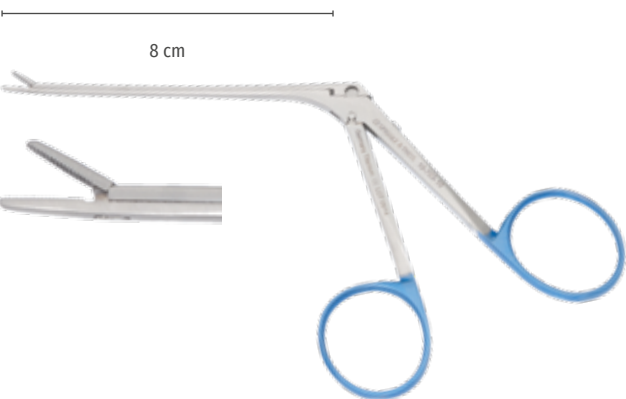
the VSB can be easily positioned and will no longer be displaced by a magnetic ghost hand.“



Hartmann ear forceps, titanium

- Non-magnetic
- Fine
- Straight
- Self-closing
- 8 cm

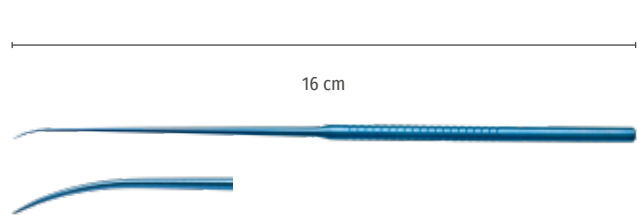
Art.-No.	Size (mm)
10-702-10	1 x 6 (serrated)
10-702-11	1 x 6 (smooth)



Hartmann ear forceps, titanium

- Non-magnetic
- Straight
- Fine
- 1 x 6 mm
- 8 cm

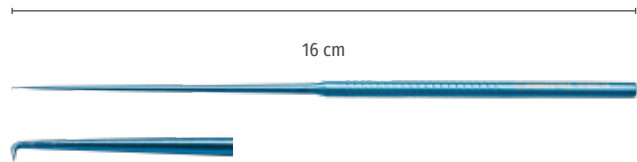
10-703-10



Micro needle, titanium

- Non-magnetic
- 16 cm

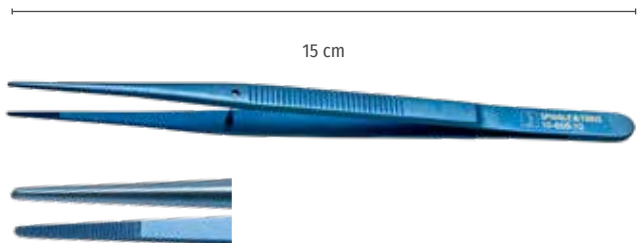
Art.-No.	Description
10-600-00	short curve, slightly curved
10-601-00	long curve, very slightly curved



Micro hook, titanium

- Non-magnetic
- Sharp
- 1 mm
- 16 cm

Art.-No.	Angle
10-603-10	90°
10-604-10	45°



Micro forceps, titanium

- Non-magnetic
- Anatomical
- 1 mm
- 15 cm

10-605-10



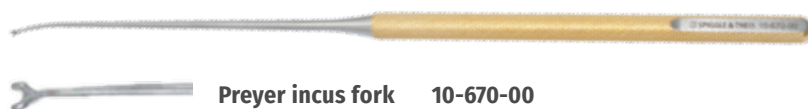


Prof. Dr. med. Serena Preyer
Chief physician of the ENT Clinic
Diakonissenkrankenhaus,
Karlsruhe, Germany

» Using the new superelastic stapes nitinol piston prostheses removes the critical surgical step of crimping the piston loop to the long process of incus during stapes surgery. «

The average diameter of the incus is 0.7 mm, but the exact diameter can vary from patient to patient. For this reason an incus fork with 0.7 mm diameter was developed in collaboration with **Prof. Serena Preyer**,

to ascertain the proper size of stapes prostheses. The size of the hook is determined by simply placing the incus fork over the incus.

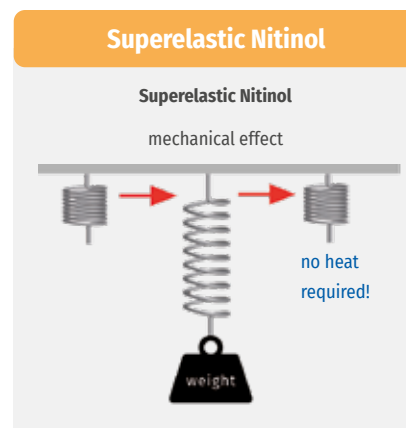


Preyer incus fork 10-670-00

Nitinol features a unique material behavior. Small changes to the composition and the manufacturing process allow you to change the effect of the mechanical shape memory (super-elasticity) or the thermal shape memory (shape memory effect).

The alloy is light-weight with excellent biocompatibility. The super-elasticity causes the material to return to its original shape through its intrinsic tension

when not under load. Unlike the shape memory effect, no temperature changes are necessary and the potential risk of heat-induced necrosis is virtually eliminated. Furthermore, the surgical procedure is abbreviated because no heating of the prosthesis is required.



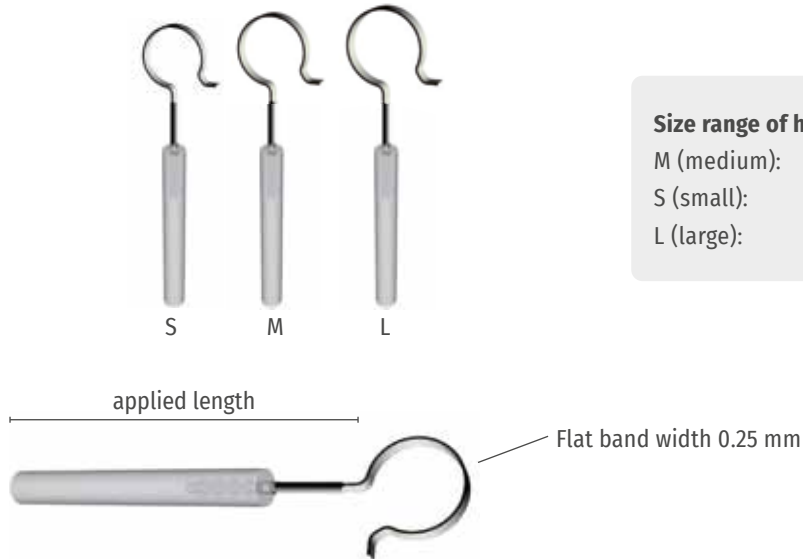
Stapes Prostheses



Common materials used to make the prostheses are platinum, a combination of platinum and PTFE and, increasingly, titanium.

In 2008, SPIGGLE & THEIS began using a **special combination** of **superelastic Nitinol** with PTFE.

Nitinol/PTFE, superelastic, sterile



PTFE shaft Ø: 0.4 mm

Incus diameter medium: 0.7 mm

Art.-No.	Applied length (mm)
10740425M	4.25
10740450M	4.50
10740475M	4.75
shortenable:	
10740600M	6.00

Incus diameter small < 0.7 mm

Art.-No.	Applied length (mm)
10740425S	4.25
10740450S	4.50
10740475S	4.75
shortenable:	
10740600S	6.00

Incus diameter large > 0.7 mm

Art.-No.	Applied length (mm)
10740425L	4.25
10740450L	4.50
10740475L	4.75
shortenable:	
10740600L	6.00

PTFE shaft Ø: 0.6 mm

Incus diameter medium: 0.7 mm

Art.-No.	Applied length (mm)
10760425M	4.25
10760450M	4.50
10760475M	4.75
shortenable:	
10760600M	6.00

Incus diameter small < 0.7 mm

Art.-No.	Applied length (mm)
10760425S	4.25
10760450S	4.50
10760475S	4.75
shortenable:	
10760600S	6.00

Incus diameter large > 0.7 mm

Art.-No.	Applied length (mm)
10760425L	4.25
10760450L	4.50
10760475L	4.75
shortenable:	
10760600L	6.00

Find more information and an instruction video on our website
www.spiggle-theis.com

Otology

Stapes Prostheses

Stapes Prostheses, Platinum/PTFE, sterile



Flat band width 0.3 mm

Characteristics:

The flat band of this prosthesis has four transversal notches. Under soft pressure of forceps the flat band closes equally and grabs perfectly without any reduction of blood flow.

Shaft diameter: 0.4 mm

Art.-No.	Applied length (mm)
10540425	4.25
10540450	4.50
10540475	4.75
10540600	6.00

Shaft diameter: 0.6 mm

Art.-No.	Applied length (mm)
10560425	4.25
10560450	4.50
10560475	4.75
10560600	6.00

Stapes Prostheses, Titanium, sterile



Flat band width 0.3 mm

Characteristics:

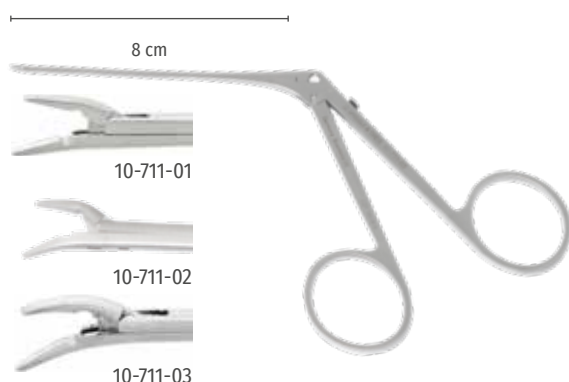
Under soft pressure of forceps the flat band closes equally and grabs perfectly without any reduction of blood flow.

Shaft diameter: 0.4 mm

Art.-No.	Applied length (mm)
10640425	4.25
10640450	4.50
10640475	4.75

Shaft diameter: 0.6 mm

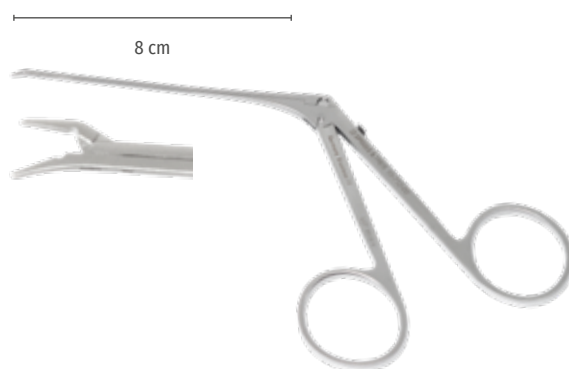
Art.-No.	Applied length (mm)
10660425	4.25
10660450	4.50
10660475	4.75



McGee wire closing forceps

- 0.8 x 3.5 mm
- 8 cm

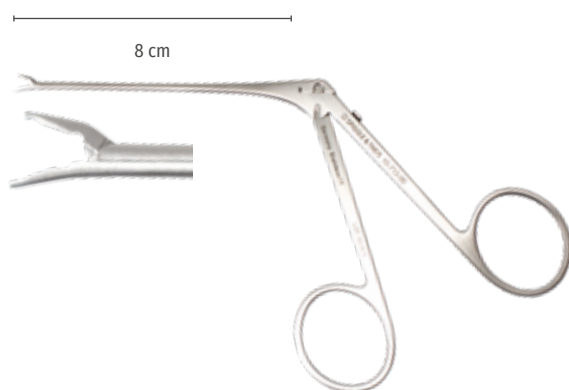
Art.-No.	Description
10-711-01	straight
10-711-02	curved right
10-711-03	curved left



Fisch-McGee wire closing forceps

- Straight
- 0.6 x 3.5 mm
- Length 8 cm

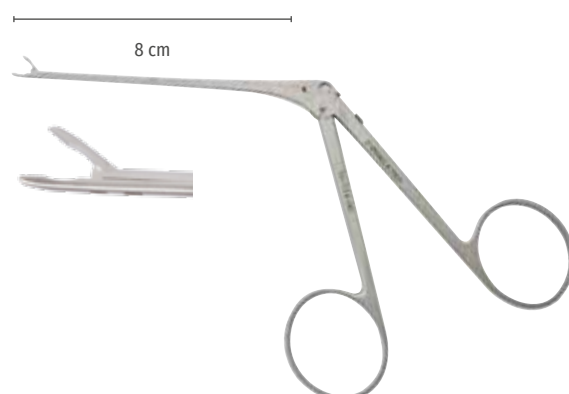
10-712-00



Müller wire closing forceps

- Straight
- 0.8 x 3.5 mm
- Rounded tip

10-713-00



Greven wire closing forceps

- Straight
- 0.8 x 5 mm
- Length 8 cm

10-714-00

Otology

- TubaVent® - Family
- TubaClean®
- Ventilation Tubes
- Middle Ear Implants / Middle Ear Instruments / Stapes Prostheses
- **Silicone Sheeting**
- Disposable Suction Tubes
- Ear Tampons

Silicone Sheeting

Silicone sheetings have a wide range of application possibilities in ENT- surgery today. The material properties of silicone play an important role: it is smooth, has an anti-adhesive surface, is flexible and - depending on the thickness - still stable. The sheeting can be easily cut to the desired shape and sized by the

user.

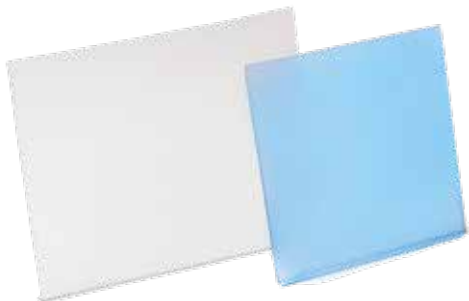
The thinner sheets are preferred in otosurgery, whilst the thicker versions are often used in rhinological surgery, e.g. as septal buttons. The length of time in which the offered forms can remain in the body must not exceed 30 days.



Miltheis, sterile:
the ready-to-use solution for splinting the eardrum

- High quality medical grade silicone
- Popular thickness of 0.13 mm
- Precut and sterilized
- 3 sterile sheets in one pouch
- Transparent or blue

Art.-No.	Dimensions (mm)	Color	Packaging (pieces/box)
1710000	6 x 20	transparent	30
1710000-B	6 x 20	blue	30
1710001	6 x 40	transparent	30
1710001-B	6 x 40	blue	30
1720000	15 x 15	transparent	20
1720001	3 x 15	transparent	40



Non-sterile

- High quality medical grade silicone
- Can be easily cut to size

Art.-No.	Dimensions (mm)	Color	Feature (shore)	Thickness (mm)	Packaging (pieces)
2030005	300 x 300	transp.	40	0.13	1



Otology

- TubaVent® - Family
- TubaClean®
- Ventilation Tubes
- Middle Ear Implants / Middle Ear Instruments / Stapes Prostheses
- Silicone Sheeting
- **Disposable Suction Tubes**
- Ear Tampons

Otology

Disposable Suction Tubes



Single-use suction tubes for otology, sterile

- Angled stainless steel cannula
- Luer-Lock connector
- Rounded tip
- Wide range of diameters
- Packaging of 50 pieces per box

Art.-No.	Length (mm)	Diameter (mm)	Color
301004	60	0.4	grey
301007	60	0.7	black
301010	60	1.0	cream
301014	60	1.4	red
302004	70	0.4	grey
302006	70	0.6	blue
302007	70	0.7	black
302008	70	0.8	green
302010	70	1.0	cream
302012	70	1.2	pink
302014	70	1.4	red
302016	70	1.6	white
302020	70	2.0	green
303004	80	0.4	grey
303007	80	0.7	black
303014	80	1.4	red
303020	80	2.0	green
303025	80	2.5	blue
303030	80	3.0	blue
303040	80	4.0	blue
304010	100	1.0	cream
304014	100	1.4	red
304020	100	2.0	green
304025	100	2.5	blue
304030	100	3.0	blue



Single-use plastic suction handle, sterile

- Suction control
- Luer-Connector
- 50 pieces / box

301000



Otology

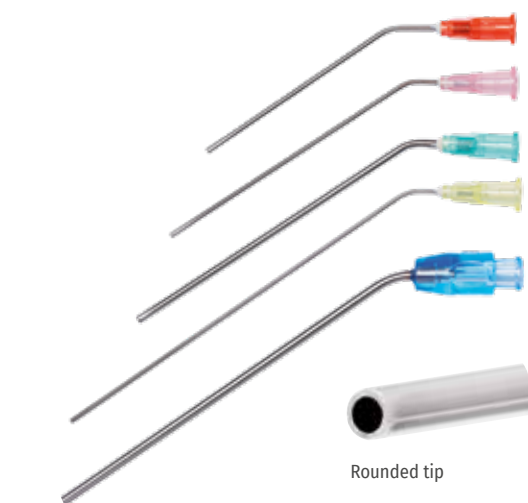
Disposable Suction Tubes

Bulkware

Single-use suction tubes for otology

Our sterile bulk packs contain 2 bags of 25 suction tubes that can be ordered in various lengths and diameters. This packaging saves valuable time and is more environmentally friendly.

- Angled stainless steel cannula
- Luer-Lock connector
- Rounded tip



2 x 25 pieces per box, sterile packed



Art.-No.	Length (mm)	Diameter (mm)	Color
302010U	70	1.0	cream
302012U	70	1.2	pink
302014U	70	1.4	red
302016U	70	1.6	white
302020U	70	2.0	green
303014U	80	1.4	red
303020U	80	2.0	green
303025U	80	2.5	blue
303030U	80	3.0	blue
303040U	80	4.0	blue
304014U	100	1.4	red
304020U	100	2.0	green
304025U	100	2.5	blue
304030U	100	3.0	blue

ENT-single-use suction tubes set, sterile, 24 Sets / Box

Every set consists of:

single-use suction tubes, angled, rounded, luer connector

Without suction handle:

- 302004 - 70 x 0.4 mm
- 302007 - 70 x 0.7 mm
- 302010 - 70 x 1.0 mm
- 302014 - 70 x 1.4 mm
- 302020 - 70 x 2.0 mm

352519

With suction handle:

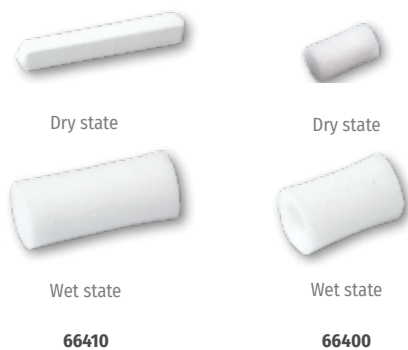
- 302004 - 70 x 0,4 mm
- 302007 - 70 x 0,7 mm
- 302010 - 70 x 1,0 mm
- 302014 - 70 x 1,4 mm
- 302020 - 70 x 2,0 mm
- 301000 - Single-use suction handle

352520



Otology

- TubaVent - Family
- TubaClean[®]
- Ventilation Tubes
- Middle Ear Implants / Middle Ear Instruments / Stapes Prostheses
- Silicone Sheeting
- Disposable Suction Tubes
- **Ear Tampons**



PVA tampons, sterile

- Expanding ear tampon for post-tympanoplastic tamponing of the external acoustic canal
- With or without central lumen

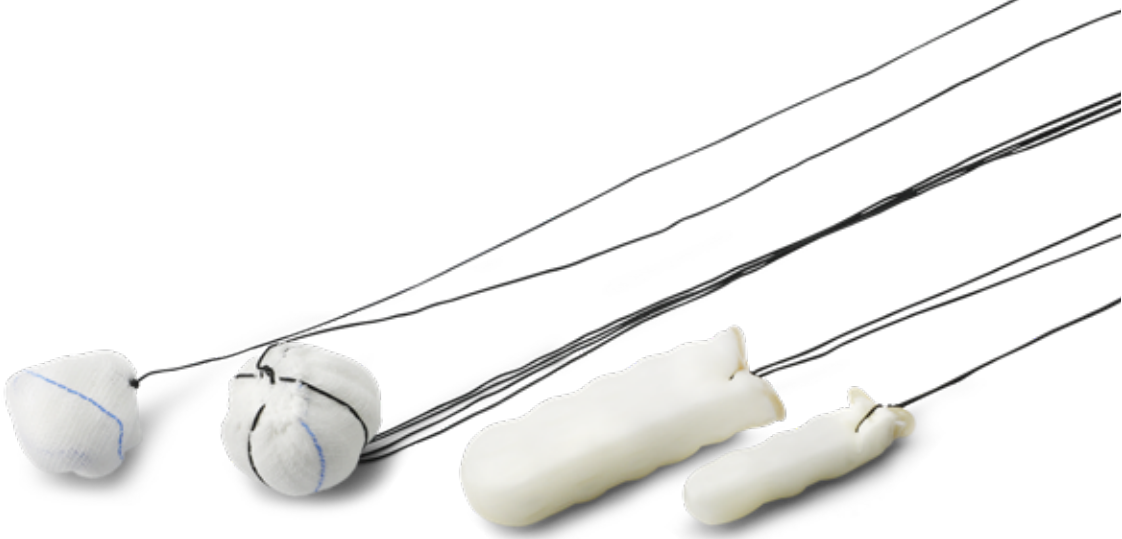
Art.-No.	Size (mm)	Feature	Packaging (pieces/box)
66400	9 x 15	with lumen	50
66410	12 x 24	without lumen	20
66420	9 x 15	without lumen	50

Important:

In order to prevent the tampon adhering to skin tissue it is absolutely vital that strips of silicone sheeting (e.g. Art.No. 1710000 or 1710001) are affixed to the eardrum and the walls of the external acoustic canal.

Rhinology

- **Nasal Packings / Tampons**
- Nasal Splints
- Silicone Sheeting / Catheter
- Suction Tubes
- ENT-Patties / Hydrocolloid Plaster



PVA (Polyvinylalcohol), latex-free

Properties:

- Expands evenly after moistening with an appropriate liquid
- Lint and fibre free, no migration of PVA particles
- Soft flexible sponge when wet
- Takes on appropriate anatomical form
- Highly absorbent
- Safety thread
- Single, sterile packaging

Application note:

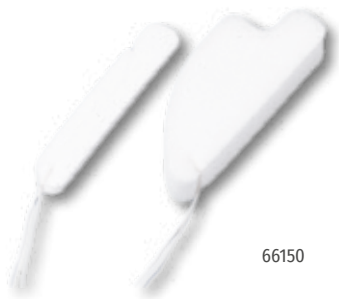
- Pay attention to enclosed instructions
- Can be easily trimmed in dry state
- Not to be used for implantation
- Only use water based liquids
- The tampons must be kept moist during the entire duration of use
- Thoroughly moisten before withdrawal
- Application period 1-3 days, max. 5 days



Expanding nasal tampons, PVA, straight, sterile

- Post-operative tamponing after rhinological procedures
- Silicone airway (if required - for easier breathing and swallowing)
- 15 cm safety thread
- Single, sterile packaging
- 20 pieces/box

Art.-No.	Dimensions (mm)	Description
66100	45 x 15 x 20	without airway
66110	80 x 15 x 20	without airway
66120	45 x 15 x 20	with airway
66130	80 x 15 x 20	with airway



66150

PVA, anatomical, sterile

- Post-operative tamponing after rhinological procedures
- Silicone airway (if required - for easier breathing and swallowing)
- 15 cm safety thread
- Single, sterile packaging
- 20 pieces/box

Art.-No.	Dimensions (mm)	Description
66140	75 x 15 x 30	with airway
66150	75 x 15 x 30	without airway
66160	75 x 10 x 30	without airway, slim



66200

66220

PVA , epistaxis, sterile

- Application as epistaxis tampon to stop bleeding in medial or posterior nasal area, or post-operative usage
- Three sizes available
- Pediatric form suitable for small children
- 15 cm safety thread
- Single, sterile packaging
- 20 pieces/box

Art.-No.	Dimensions (mm)	Description
66200	100 x 15 x 25	large, curved
66210	55 x 15 x 25	medium, straight
66220	35 x 15 x 25	pediatric, straight





Expanding sinus tampons, PVA, sterile

- Post-operative application after sinus surgical procedures
- Special shape for tamponing of the ethmoid cavity
- 15 cm safety thread
- Sterile packed in pairs
- 20 pairs/box

Art.-No.	Dimensions (mm)	Description
66300	35 x 9 x 12	Sinus tampon
66310	35 x 6 x 12	Sinus tampon, slim



Nasal packings, foam, with latex cover, sterile

- Post-operative application for rhino-/ septoplasty
- Non-adhesive
- Easy application
- X-ray contrast strip
- 30 cm safety thread
- Double sterile packed in pairs
- 25 pairs/box

Art.-No.	Dimensions (mm)
35043	70 x 20 x 10
35044	50 x 20 x 10
35045	60 x 20 x 10
35046	80 x 20 x 10
35048	80 x 20 x 20
35049	80 x 20 x 15
35051	60 x 20 x 15
35052	70 x 20 x 15
35054	60 x 20 x 20
35055	70 x 20 x 20
35057	50 x 10 x 10
35058	60 x 10 x 10
35059	70 x 10 x 10
35069	80 x 10 x 10
35145	100 x 20 x 10



One set (double sterile packed) includes 1 tampon, 3 gauze compresses, 2 dental rolls, 2 suction catheters (CH12)



Bellocq type, classic version

5 threads (50 cm)

- X-ray contrast strip
- With 2 dental rolls
- Single, sterile packaging

Art.-No.	Size	Dimensions (mm)	Packaging (box)
35009	small	30 x 30	10 pieces
35010	medium	40 x 40	10 pieces
35011	large	50 x 50	10 pieces
35060	small	30 x 30	5 sets
35061	medium	40 x 40	5 sets
35062	large	50 x 50	5 sets

Bellocq type, modified version

6 threads (55 cm)

- X-ray contrast strip
- With 2 dental rolls
- Single, sterile packaging



One set (double sterile packed) includes 1 tampon, 3 gauze compresses, 2 dental rolls, 2 suction catheters (CH12)



Art.-No.	Size	Dimensions (mm)	Packaging (box)
35006	small	35 x 40	10 pieces
35007	medium	35 x 50	10 pieces
35008	large	35 x 60	10 pieces
35063	small	35 x 40	5 sets
35064	medium	35 x 50	5 sets
35065	large	35 x 60	5 sets

Prof. Brusis nasopharyngeal foam tampons

4 threads (60cm)

- With 2 dental rolls
- Single, sterile packaging



Art.-No.	Size	Dimensions (mm)	Packaging (box)
35080	small	70 x 30 x 30	10 pieces double packed
35022*	medium	80 x 35 x 35	10 pieces double packed
35081	medium	80 x 35 x 35	10 pieces double packed
35082	large	90 x 45 x 45	10 pieces double packed

* With x-ray contrast strip



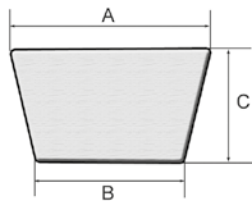
Rhinology

- Nasal Packings / Tampons
- **Nasal Splints**
- Silicone Sheeting / Catheter
- Suction Tubes
- ENT-Patties / Hydrocolloid Plaster

Thermoplastic, non-sterile

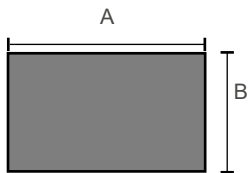
"Thermoplastic" is used to describe a substance that changes its consistency and stability under temperature influence. When heated in a water bath, the material changes its colour from white to transparent and becomes malleable.

The process is reversed by cooling i.e. the product sets in the modelled shape. Using such material for an external nasal splint allows individual fitting according to the patients anatomy.



- Self-adhesive back (NOT 2051010 and 2050010)
- Less time and work required than with plaster
- Includes three-part foam bridge
- Five sizes in two different thicknesses available
- 10 pieces/box

Art.-No.	Size	Dimensions A x B x C (mm)	Thickness (mm)
2050100	small	56 x 38 x 30	2.4
2050200	standard	64 x 40 x 36	2.4
2050300	large	66 x 42 x 45	2.4
2051100	small	56 x 38 x 30	1.6
2051200	standard	64 x 40 x 36	1.6
2051300	large	66 x 42 x 45	1.6

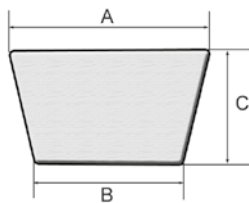


Art.-No.	Feature	Dimensions A x B (mm)	Thickness (mm)
2050000	cut-to-size	80 x 50	2.4
2050010	cut-to-size	100 x 75	2.4
2051000	cut-to-size	80 x 50	1.6
2051010	cut-to-size	100 x 75	1.6

Rhinology

External nasal splints

Aluminium, non-sterile



- Padded aluminium nasal splint
- Easily malleable
- Self-adhesive back
- Four sizes available
- Self-adhesive dorsum foam pad included

Art.-No.	Size	Dimensions A x B x C (mm)	Packaging (pieces/box)
2060100	mini	50 x 33 x 28	10
2060200	small	56 x 38 x 30	10
2060200-25	small	56 x 38 x 30	25
2060300	standard	64 x 40 x 36	10
2060300-25	standard	64 x 40 x 36	25
2060400	large	66 x 42 x 45	10
2060400-25	large	66 x 42 x 45	25

Aluminium, set, non-sterile

Contents per box:

- 5 x nasal splints with self-adhesive back
- 5 x foam protective bases
- 5 x alcohol swabs (cleansing swabs)
- 5 x Skin Prep™ (skin protection swabs)
- 5 x nose strips (sterile nasal strips)
- 5 x Remove™ (adhesive removal swabs)



Art.-No.	Size	Dimensions A x B x C (mm)	Packaging (sets/box)
2060300-K	standard	64 x 40 x 36	5

Only on request / custom made:

2060100-K	mini	50 x 33 x 28	5
2060200-K	small	56 x 38 x 30	5
2060400-K	large	66 x 42 x 45	5



Rhinology

Internal nasal splints



With airway, silicone, sterile

- Integral airway allows post-operative nasal breathing
- Silicone prevents adhesion
- Soft material for easy insertion and removal
- Punched suture holes
- Surface with Lotus leaf effect prevents adhesion of secretions / tissue
- Packed in pairs

Art.-No.	Size	Thickness (mm)	Packaging (pairs/box)
2030100	standard	1	5
E3147S	standard	1	10
2030100-50	standard	1	50



standard size

pediatric size

Without airway, silicone, sterile

- Soft material for easy insertion and removal
- Silicone prevents adhesion
- Punched suture holes
- Surface with Lotus leaf effect prevents adhesion of secretions / tissue
- Packed in pairs

Art.-No.	Size	Thickness (mm)	Packaging (pairs/box)
2030110	standard	1	5
2030115	pediatric	1	5
E3147P	standard	1	10



Septal button, silicone, sterile

- For non-surgical closure of septal perforation
- Silicone prevents adhesion
- Soft material for easy insertion and removal
- No scabbing, epistaxis or other septal perforation symptoms
- Surface with Lotus leaf effect prevents adhesion of secretions / tissue

Art.-No.	Size (cm)	Thickness (mm) per disk	Feature	Packaging (piece)
2031100	3.2	1	one-piece	1
2031110	3.2	1	two-piece	1



Fluoroplastic, sterile

- Bivalve splint, provides septal support
- Punched suture holes
- Fluoroplastic prevents adhesion
- Easy insertion and removal
- Available in two sizes and three thicknesses

Art.-No.	Size	Thickness (mm)	Packaging
2042025	large	0.25	5 (pairs/box)
2042025-S	large	0.25	10 (pieces/box)
2042050	large	0.50	5 (pairs/box)
2042050-S	large	0.50	10 (pieces/box)
2042075	large	0.75	5 (pairs/box)
2042075-S	large	0.75	10 (pieces/box)
2041025	standard	0.25	5 (pairs/box)
2041025-S	standard	0.25	10 (pieces/box)
2041050	standard	0.50	5 (pairs/box)
2041050-S	standard	0.50	10 (pieces/box)
2041075	standard	0.75	5 (pairs/box)
2041075-S	standard	0.75	10 (pieces/box)



Fluoroplastic, "cut-to-size", sterile

- Cut-to-size
- Packed in pairs
- 5 pairs/box

Art.-No.	Size	Thickness (mm)
2043025	64 x 38	0.25
2043050	64 x 38	0.50



Fluoroplastic, sterile

- Anti-adhesive characteristics of fluoroplastic prevent crustination
- Falciform
- 5 pairs/box

Art.-No.	Size	Thickness (mm)
2044050	standard	0.5

Rhinology

- Nasal Packings / Tampons
- Nasal Splints
- **Silicone Sheeting / Catheter**
- Suction Tubes
- ENT-Patties / Hydrocolloid Plaster

Silicone Sheeting

Silicone sheeting has a wide range of application possibilities in ENT- surgery today. The material properties of silicone play an important role: it is smooth, has an anti-adhesive surface, is flexible and - depending on the thickness - still stable. It is possible to manufacture nearly every thickness.

The sheeting can also be easily cut to the desired shape and size by the user. The thinner sheets are preferred in otosurgery, whilst the thicker versions are often used in rhinological surgery, e.g. as septal buttons.



“cut-to-size“, non-sterile

- High quality medical grade silicone
- Can be easily cut to size



Art.-No.	Dimensions (mm)	Color	Feature (shore)	Thickness (mm)	Packaging (pieces)
2030040	300 x 300	transp.	40	1.00	1
2030040-B	300 x 300	blue	40	1.00	1
2030050	300 x 300	transp.	40	1.25	1
1760100	300 x 300	transp.	60	1.00	1
1760100-B	300 x 300	blue	60	1.00	1
1780100-B	300 x 300	blue	80	1.00	1
1762100-BSU	70 x 55	blue	60	1.00	25
1762100-BSU-100	70 x 55	blue	60	1.00	100
1762100-SU	70 x 55	transp.	60	1.00	25

Epistaxis Balloon Catheter



- Silicone, sterile, 1 piece/box, standard

3103-0930

Properties:

- Double-balloon catheter with two independently inflatable balloons
- The smaller balloon (10 cc) serves for stopping the bleeding in the nasopharynx
- The larger balloon (30 cc) stops bleeding within the main nasal cavity
- Integral airway allows post-op nasal breathing
- Slightly curved shape and flattened tip for easier insertion

Rhinology

- Nasal Packings / Tampons
- Nasal Splints
- Silicone Sheeting / Catheter
- **Suction Tubes**
- ENT-Patties / Hydrocolloid Plaster



Rounded tip



Suction control in hub

Suction Tube single-use, sterile

- Angled stainless steel cannula
- Rounded tip
- Suction control in hub
- Luer connector
- Wide range of diameters
- Packaging of 50 pieces per box

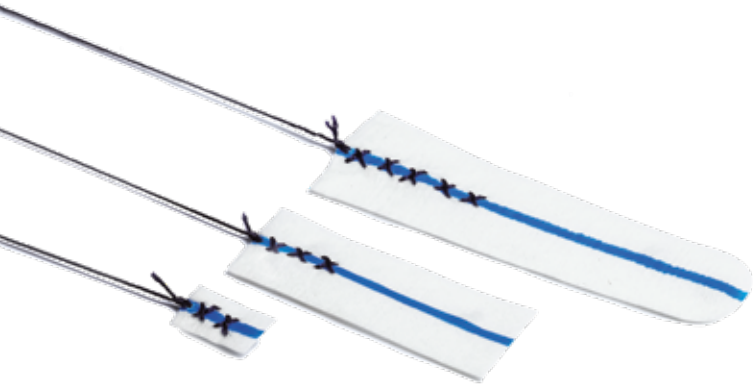
Art.-No.	Length (mm)	Diameter (mm)
3012020	120	2.0
3012025	120	2.5
3012030	120	3.0
3012035	120	3.5
3012040	120	4.0
3012050	120	5.0
3014020	140	2.0
3014025	140	2.5
3014030	140	3.0
3014035	140	3.5
3014040	140	4.0
3014050	140	5.0
3016020	160	2.0
3016025	160	2.5
3016030	160	3.0
3016035	160	3.5
3016040	160	4.0
3016050	160	5.0

Please call +49 2206 / 90 81 11 to learn more about our customized OR-sets. (Minimum order: 150 sets)

Rhinology

- Nasal Packings / Tampons
- Nasal Splints
- Silicone Sheeting / Catheter
- Suction Tubes
- **ENT-Patties / Hydrocolloid Plaster**

ENT-Patties, sterile



Advantages:

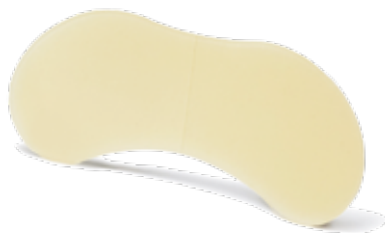
- Quick and easy use
- High level of absorption
- 100% viscose
- No adhesion
- No fraying
- X-ray contrast strip
- 30 cm fixation thread
- Sterile packaging

Art.-No.	Size (cm)	Packaging (pieces)
341015	1 x 1.5	10 x 10
342050	2 x 5	10 x 10
34207525	2 - 2.5 x 7.5	10 x 6

Occlusion Dressing, sterile - Hydrocolloid plaster as occlusion plaster

The occlusion plaster is a hydroactive, sterile and self-adhesive wound dressing for moist wound treatment. In this special butterfly-like shape the wound dressing is used for the occlusion of the nose and sinuses by closing

the nostrils. The dressing provides a moist wound environment that promotes physiological healing processes. The plaster may be used for a maximum of two days.



Indications:

- Follow-up treatment after sinonasal surgery (endonasal sinus surgery, nasal septum surgery, turbinate surgery, endonasal laser surgery, transnasal neurosurgical operations, endonasal lacrimal surgery)
- Surgical treatment of choanal atresia or CSF fistula
- Moist wound treatment of endonasal injuries
- Moist wound treatment of dry nose
- Intermittent and continuous therapy of Osler's disease
- Packaging of 30 pieces per box

Art.-No.	Dimesions (mm)
34-552216	55 x 22 x 16

Surgical Motor Systems

- **SpeedSurg / HighSpeed**
- SpeedSurg / LowSpeed
- Miscellaneous Products

Surgical Motor Systems

SpeedSurg / HighSpeed

Versatile user options and two motor connections for maximum comfort

Thanks to its diverse application functions, for driving an electronic motor for drilling and sawing on bones, as well as for shaving treatment in the ENT area or head and neck surgery the SpeedSurg control unit can handle the entire range of ENT applications.

The system automatically detects the connected motors and controls the appropriate modes.

A built-in warning function notifies the operator about the start of the HighSpeed mode, the running direction and most possible system failures.



- 300-80,000 rpm, continuously
- Integrated warning function
- 8 roller pump

78CU80-EN

HighSpeed Electronic Motor for Micro Drill System

- Compact low-vibration motor with up to 80,000 rpm
- Low heat generation
- Sturdy Design
- Light weight
- Compatible with all SPIGGLE & THEIS HighSpeed handpieces

78MM08003



Please note that not all goods might be for sale in your country.

SPIGGLE & THEIS | GK_E_8



Supreme control and usability in everyday use

Thanks to their optimized ergonomics and the integrated **SecureLock** and **QuickRelease** systems, the SPIGGLE & THEIS handpieces guarantee optimal control and maximum user comfort.



SecureLock

Acoustic and tactile feedback confirms the correct and safe attachment of the handpiece.

QuickRelease

For easy and safe release of rotating instruments. Thanks to the special drill shank and the QuickRelease function, fast drill replacement during surgery becomes child's play.

Shaft coupling



guarantees secure and easy locking
of the rotary instrument.

Surgical Motor Systems

SpeedSurg / HighSpeed

- Details:**
- Low-vibration
 - Integrated safety mechanisms **SecureLock** and **QuickRelease**
 - Up to 80,000 rpm



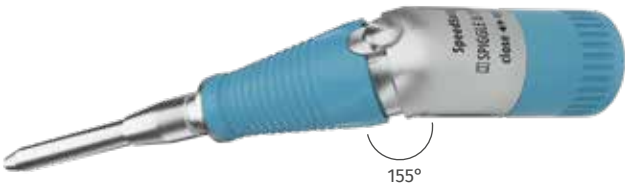
Handpiece for rotary instruments, black



Art.-No.	Length (mm)	Form	Farbe
78HG1070	70	straight	black
78HW1070	70	angled	black

CI - Handpiece for rotary instruments, blue

- special CI-handpiece and burs available
- longer, tapered tip for a better sight
- superb concentricity due to advanced bearing design



Art.-No.	Length (mm)	Form	Color
78CI1080	75	angled	blue





Irrigation set with cooling tube for HighSpeed and CI-HighSpeed, sterile, 10 pieces/box

- for HighSpeed Drill Handpiece, **black**, suitable for 78HG1070 and 78HW1070
- for CI HighSpeed Drill Handpiece, **blue**, suitable for 78CI1080

78ZS09



Irrigation set with cooling tube for HighSpeed, black, sterile, 10 pieces/box

- for HighSpeed Drill Handpiece, **black**, suitable for 78HG1070 and 78HW1070

78ZS06



Irrigation set with cooling tube for CI-HighSpeed, blue, sterile, 10 pieces/box

- for CI HighSpeed Drill Handpiece, **blue**, suitable for 78CI1080

78KSCI



Irrigation set without cooling tube, 10 pieces/box

- Pre-installed clamps on the irrigation set
- Sterile
- Single-use
- 3300 mm

78ZS07

Surgical Motor Systems

Rotary Instruments for **HighSpeed** applications

The spearhead of the SpeedSurg system represent our Rotary Instruments

Skilled workmanship and inventive design are the driving forces of our rotary instruments. The design guarantees low-vibration drilling and milling work with the highest precision. Different geometries and different diameters allow excellent operative results.

The distinctive cutting geometry of the A-toothing concept makes it unique in its class and enables superior nontraumatic, fast drilling and milling.

Color coding

For a fast and secure assignment

- HighSpeed = **black**
- CI-HighSpeed = **blue**



All our rotating instruments convince with low vibration and high concentricity

Surgical Motor Systems

for **HighSpeed** applications, **sterile**, **reusable**, length I, 1 piece/box



- Drilling heads with asymmetrical cutting design

Carbide

Art.-No.	Blades	Ø (mm)	Length (mm)
HST760605X	6	0.5	76.5
HST760608X	6	0.8	76.5
HST760610X	6	1.0	76.5
HST760614X	6	1.4	76.5
HST760618X	6	1.8	76.5
HST760623X	6	2.3	76.5
HST740831X	8	3.1	74.5
HST741040X	10	4.0	74.5
HST741250X	12	5.0	74.5
HST741460X	14	6.0	74.5



- Atraumatic and fast drilling and milling

Steel, A-toothed

Art.-No.	Blades	Ø (mm)	Length (mm)
HSSMA7431X	10	3.1	74.5
HSSMA7440X	12	4.0	74.5
HSSMA7450X	14	5.0	74.5
HSSMA7460X	16	6.0	74.5



- Dense and uniform diamond distribution for exact grinding behavior

Diamond, medium grain

Art.-No.	Ø (mm)	Length (mm)
HSDMD7604X	0.4	76.5
HSDMD7606X	0.6	76.5
HSDMD7608X	0.8	76.5
HSDMD7610X	1.0	76.5
HSDMD7614X	1.4	76.5
HSDMD7618X	1.8	76.5
HSDMD7623X	2.3	76.5
HSDMD7431X	3.1	74.5
HSDMD7440X	4.0	74.5
HSDMD7450X	5.0	74.5
HSDMD7460X	6.0	74.5



- Super rough diamond for bone removal and grinding

Diamond, super coarse grain

Art.-No.	Ø (mm)	Length (mm)
HSDR27623X	2.3	76.5
HSDR27431X	3.1	74.5
HSDR27440X	4.0	74.5
HSDR27450X	5.0	74.5
HSDR27460X	6.0	74.5

Length I: head diameter up to 3.0 mm - overall length 76.5 mm / head diameter from 3.0 mm - overall length 74.5 mm

Surgical Motor Systems

for **CI-HighSpeed** applications, **sterile, reusable**, length CI / CI93, 1 piece/box



- Drilling heads with asymmetrical cutting design

Carbide

Art.-No.	Blades	Ø (mm)	Length(mm)
HSTCI760605X	6	0.5	79.5
HSTCI760608X	6	0.8	79.5
HSTCI760610X	6	1.0	79.5
HSTCI760614X	6	1.4	79.5
HSTCI760618X	6	1.8	79.5
HSTCI760623X	6	2.3	79.5
HSTCI1431X	8	3.1	79.5
HSTCI1440X	10	4.0	79.5
HSTCI1450X	12	5.0	79.5
HSTCI1460X	14	6.0	79.5



- Atraumatic and fast drilling and milling

Steel, A-toothed

Art.-No.	Blades	Ø (mm)	Length (mm)
HSSMACI23X	10	2.3	93.0
HSSMACI31X	10	3.1	79.5
HSSMACI40X	12	4.0	79.5
HSSMACI50X	14	5.0	79.5
HSSMACI60X	16	6.0	79.5



- Bottleneck
- Dense and uniform diamond distribution for exact grinding behavior

Diamond, medium grain

Art.-No.	Ø (mm)	Length (mm)
HSDMDCI7604X	0.4	93.0
HSDMDCI06X	0.6	93.0
HSDMDCI08X	0.8	93.0
HSDMDCI12X	1.2	93.0
HSDMDCI7614X	1.4	93.0
HSDMDCI17X	1.7	93.0
HSDMDCI23X	2.3	93.0
HSDMDCI27X	2.7	79.5
HSDMDCI31X	3.1	79.5
HSDMDCI40X	4.0	79.5
HSDMDCI7450X	5.0	79.5
HSDMDCI7460X	6.0	79.5

- Cylinder



HSDMZCI06X	0.6	93.0
------------	-----	------

Diamond, super coarse grain

Art.-No.	Ø (mm)	Length (mm)
HSDRCI27623X	2.3	93.0
HSDSGCI31X	3.1	79.5
HSDSGCI40X	4.0	79.5
HSDSGCI50X	5.0	79.5
HSDRCI27460X	6.0	79.5

- Super rough diamond for bone removal and grinding

Surgical Motor Systems

- SpeedSurg / HighSpeed
- **SpeedSurg / LowSpeed**
- Miscellaneous Products

Surgical Motor Systems

SpeedSurg / LowSpeed



Whether you work with the new **SpeedSurg** or with the DT55, we offer you the ideal solution for both systems. Thanks to compatibility, you can use your proven handpieces and accessories on both systems.

78CU80-EN

LowSpeed Electronic motor for drilling, sawing and shaving

- For use with SpeedSurg control unit **78CU80-EN** or **DT55** (previous system)
- Machine cleaning possible
- Low heat generation
- Sturdy Design
- Compact, low-vibration motor with up to 40,000 rpm
- Compatible with SPIGGLE & THEIS LowSpeed handpieces

77MM010



LowSpeed drill handpieces, angled *

- Machine cleaning possible

Art.-No.	Burs (mm)
77HW001	70
77HW002	95
77HW003	125

* Cooling tube included

LowSpeed drill handpieces, straight *

- Machine cleaning possible

Art.-No.	Burs (mm)
77HG001	44.5
77HG002	70.0

* Cooling tube included

Cooling tubes for LowSpeed drill handpieces, 1 piece

- short spray nozzle
- constant flow

77ZZS03 for handpiece 77HG002 and 77HW001



- long spray nozzle
- droplet irrigation

77ZZS06 for handpiece 77HG002 und 77HW001



- long spray nozzle
- droplet irrigation
- flexible

77ZZS06-B

**Irrigation set without cooling tube, 10 pieces/box**

- Pre-installed clamps on the irrigation set
- Sterile
- Single-use
- 3300 mm

78ZS07

Surgical Motor Systems

For LowSpeed applications, non-sterile, reusable, length 70 mm, 1 piece/box



• Drilling heads with asymmetrical cutting design

Carbide

Art.-No.	Blades	Ø (mm)	Length (mm)
CR070010506	6	0.5	70
CR070010806	6	0.8	70
CR070011006	6	1.0	70
CR070011206	6	1.2	70
CR070011406	6	1.4	70
CR070011606	6	1.6	70
CR070011806	6	1.8	70
CR070012106	6	2.1	70
CR070012306	6	2.3	70
CR070012708	8	2.7	70
CR070013108	8	3.1	70
CR070013508	8	3.5	70
CR070014010	10	4.0	70
CR070014510	10	4.5	70
CR070015008	8	5.0	70
CR070015012	12	5.0	70
CR070016008	8	6.0	70
CR070016014	14	6.0	70
CR070016508	8	6.5	70
CR070017016	16	7.0	70



• Drilling heads with asymmetrical cutting design

Carbide, A-toothed

Art.-No.	Blades	Ø (mm)	Length (mm)
CR070221010	10	1.0	70
CR070221410	10	1.4	70
CR070222310	10	2.3	70
CR070223110	10	3.1	70
CR070223510	10	3.5	70
CR070224012	12	4.0	70
CR070225014	14	5.0	70
CR070226016	16	6.0	70



• Drilling heads with asymmetrical cutting design

Carbide, Cross-Cut

Art.-No.	Blades	Ø (mm)	Length (mm)
CR070021410	10	1.4	70
CR070022312	12	2.3	70
CR070023112	12	3.1	70
CR070024014	14	4.0	70
CR070025014	14	5.0	70
CR070026016	16	6.0	70

Further non-sterile burs of lengths 95 mm and 125 mm on request

Surgical Motor Systems

For LowSpeed applications, non-sterile, reusable, length 70 mm, 1 piece/box



Steel

Art.-No.	Blades	Ø (mm)	Length (mm)
SR070010606	6	0.6	70
SR070010806	6	0.8	70
SR070011006	6	1.0	70
SR070011408	8	1.4	70
SR070011808	8	1.8	70
SR070012308	8	2.3	70
SR070012710	10	2.7	70
SR070013106	6	3.1	70
SR070013110	10	3.1	70
SR070013506	6	3.5	70
SR070013512	12	3.5	70
SR070014012	12	4.0	70
SR070014512	12	4.5	70
SR070015008	8	5.0	70
SR070015012	12	5.0	70
SR070016014	14	6.0	70
SR070017016	16	7.0	70



Steel, A-toothing

Art.-No.	Blades	Ø (mm)	Length (mm)
SR070222310	10	2.3	70
SR070223110	10	3.1	70
SR070223510	10	3.5	70
SR070224012	12	4.0	70
SR070225014	14	5.0	70
SR070226016	16	6.0	70

• Atraumatic and fast drilling and milling

Further non-sterile burs of lengths 95 mm and 125 mm on request



Surgical Motor Systems

For LowSpeed applications, non-sterile, reusable, length 70 mm, 1 piece/box



- Dense and uniform diamond distribution for exact grinding behavior

Diamond, medium grain

Art.-No.	Ø (mm)	Length (mm)
DR070010691	0.6	70
DR070010791	0.7	70
DR070010891	0.8	70
DR070011091	1.0	70
DR070011291	1.2	70
DR070011491	1.4	70
DR070011691	1.6	70
DR070011891	1.8	70
DR070012191	2.1	70
DR070012391	2.3	70
DR070012591	2.5	70
DR070012791	2.7	70
DR070012991	2.9	70
DR070013191	3.1	70
DR070013591	3.5	70
DR070014091	4.0	70
DR070014591	4.5	70
DR070015091	5.0	70
DR070016091	6.0	70
DR070017091	7.0	70



- Super rough diamond for bone removal and grinding

Diamond, extra coarse grain

Art.-No.	Ø (mm)	Length (mm)
DR070012393	2.3	70
DR070012793	2.7	70
DR070013193	3.1	70
DR070013593	3.5	70
DR070014093	4.0	70
DR070014593	4.5	70
DR070015093	5.0	70
DR070016093	6.0	70
DR070017093	7.0	70



Diamond, medium grain, barrel

Art.-No.	Ø (mm)	Length (mm)
DR070132091	2.0	70

Surgical Motor Systems

For LowSpeed applications, non-sterile, reusable, 1 piece/box



Carbide, egg shaped

	Blades	Ø (mm)	Length (mm)
CR070074008	8	4.0	70
CR070075510	10	5.5	70



Carbide, Lindemann bone bur

	Blades	Ø (mm)	Length (mm)
CR065051604	4	1.6	65
CR065052104	4	2.1	65



Steel, bud shaped

	Blades	Head length	Ø (mm)	Length (mm)
SR070086014	14	11.0	6.0	70
SR070087016	16	12.5	7.0	70
SR070088016	16	14.0	8.0	70



Steel, bud shaped, cross-cut

	Blades	Head length	Ø (mm)	Length (mm)
SR070095012	12	9.5	5.0	70
SR070096014	14	11.0	6.0	70
SR070098016	16	14.0	8.0	70



Steel, cylindrical, cross-cut

	Blades	Head length	Ø (mm)	Length (mm)
SR070126014	14	11.0	6.0	70



Steel, egg shaped, cross-cut

	Blades	Head length	Ø (mm)	Length (mm)
SR070074010	10	9.5	4.0	70
SR070075012	12	10.0	5.0	70
SR070076014	14	11.0	6.0	70

Further non-sterile burs of lengths 95 mm and 125 mm on request



Surgical Motor Systems

SpeedSurg / LowSpeed

Spike Cutter, straight



Art.-No.	ID Ø (mm)	WL (mm)	Angle
78SB130	3.4	105	0°
78SB230	4.2	105.1	0°

Spike Cutter, concave



Art.-No.	ID Ø (mm)	WL (mm)	Angle
78SB131-C	3.4	104.3	15°
78SB231-C	4.2	104.3	15°
78SB330-C	3.4	101.8	30°
78SB430-C	4.2	101.8	30°
78SB134-C	3.4	98.8	40°
78SB234-C	4.2	98.8	40°

Agg. Full Radius, straight



Art.-No.	ID Ø (mm)	WL (mm)	Angle
78SB100	3.4	105	0°
78SB200	4.2	105	0°

Agg. Full Radius, concave

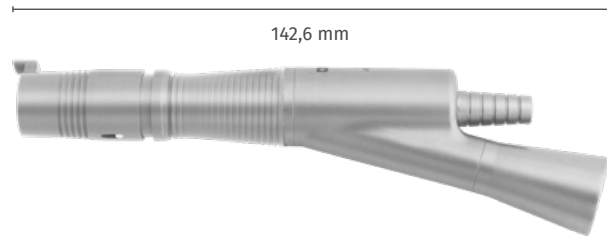


Art.-No.	ID Ø (mm)	WL (mm)	Angle
78SB315	3.4	104.3	15°
78SB415	4.2	104.3	15°
78SB331	3.4	101.8	30°
78SB430	4.2	101.8	30°
78SB340	3.4	98.8	40°
78SB440	4.2	98.8	40°



- Speed range in oscillating mode: 300 - 5000 U/min
- Oscillation period: 0.2 - 3.0 sec/cycle
- Speed range in continuous mode: 300 - 6000 rpm
- Max. torque at shaver blade: 12 Ncm

ENT Shaver Handpiece, angled



78SH00

- 15,000 rpm
- External cooling
- Machine cleaning possible

Handpiece for micro sagittal saw, 1 piece



77SP000 *

- 15,000 rpm
- External cooling
- Machine cleaning possible

Handpiece for oscillating micro saw, 1 piece



77S0000 *

- 2 mm stroke
- External cooling
- Machine cleaning possible

Handpiece for micro compass saw, 1 piece



77SS00 *

*Saw blades not included in delivery.

Surgical Motor Systems

- SpeedSurg / HighSpeed
- SpeedSurg / LowSpeed
- **Miscellaneous Products**

Surgical Motor Systems

Miscellaneous Products



Stand for rotary instruments, LowSpeed

- For instruments with length 70 mm
- Stainless steel
- Sterilizable
- For 24 burs

BS23507024



Stand for rotary instruments, HighSpeed

- For all offered bur lengths available
- Stainless steel
- Sterilizable
- For 16 burs

BS7800116



Stand for rotary instruments, CI / CI93-HighSpeed

- Length CI / CI93
- Stainless steel
- Sterilizable
- For 16 burs

BS78CI016



Foot pedal Vario IPX8 for micro drill and shaver system

- Coolant regulation
- Program selection
- Motor controller

78FS01



Tripod for coolant

78ST45



Nozzle 78AH01

- For HighSpeed and LowSpeed drill handpiece

78AH01



Nozzle 78AM01

- For HighSpeed and LowSpeed electronic motor

78AM01



Special Oil Spray

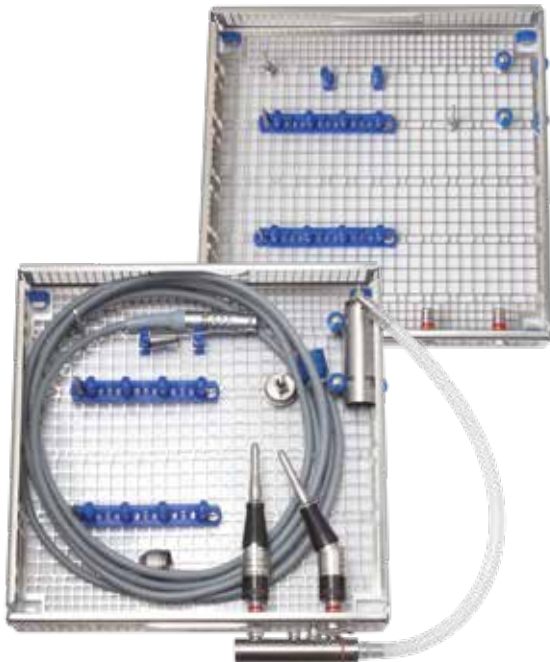
- Maintenance spray for drill handpieces, electronic motors and instruments

00-108-005



Surgical Motor Systems

Miscellaneous Products



System screen basket for drill handpieces and electronic motors

- Multi-system basket 236 x 236 x 48 (43), large grid, buffering elements
- Multi-system cover 239 x 239 x 7
- Hanger bracket, rotatable
- Stop pin
- 3-step stepped sleeve
- Universal fixation, cheese-head screw (standard)
- Flexible holding band, 2 x holder segment
- Plate 5 mm, Ø 10 mm, Ø 4 mm hole, blue
- Flat adapter nut
- Multiadapter with 1 x special thread on the out- and inside
- Sinking tube with 2 x plug-in adapter with seal, quick fixation, plug connection and 1 threaded plug
- Cap adapter filter Ø 10 mm, standard filter, ring Ø 11.5 x 1 mm
- LL female tube attachment Ø 6.5 mm
- Tube Ø 5 mm (inner diameter), 30 cm

Validated cleaning and sterilization system

78SK00

SpeedSurg Set

- Control unit
- Electronic motor
- Foot pedal
- Tripod for coolant

78SS80-SET-EN



Bandages and Swabs

- **Ear, Head, and Nasal Bandages**
- Swabs

Bandages and Swabs

Ear Bandages

- Advantages:**
- Easy and quick application
 - Optimal patient comfort
 - Compress included
 - Available in different sizes
 - Ready for application
 - Single sterile packaging



Ear bandage, one-sided

Art.-No.	Size	Packaging (pieces/box)
35000	small	10
35001	medium	10
35002	large	10



Ear bandage, two-sided

Art.-No.	Size	Packaging (pieces/box)
35030	small	5
35029	medium	5
35028	large	5



Ear bandage for otoplasty

Art.-No.	Size	Packaging (pieces/box)
35033	small	5
35032	medium	5
35031	large	5





Ear bandage, one-sided

- Post-operative outer ear bandage
- Variability through hook-and-loop fastener
- Integrated compresses
- Easy handling
- High wearing comfort through asymmetrically attached hook-and-loop fastener
- Single sterile packaging
- 10 pieces/box

35180



Siebert ear bandage

- With one-sided self-adhesive surface
- D-shaped
- Double sterile packaging

Art.-No.	Material	Size	Packaging (sets/box)
35106	foam	universal	5



External nasal bandage, non-sterile

- For post-operative nasal surgery
- Cotton compress contains a stretch net bandage
- Absorbs nasal secretion
- Universal size

Art.-No.	Size	Packaging (pieces/box)
10903	large	20
10904	small	40



Elastic head bandage, non-sterile

- For post-operative head surgery
- Elastic stretch bandage with face opening

Art.-No.	Size	Packaging (pieces/box)
90005	large	25
90006	small	25

Bandages and Swabs

- Ear, Head, and Nasal Bandages
- **Swabs**

Bandages and Swabs

Swabs

Pointed swabs



Advantages:

- All products with x-ray contrast strips
- Made of cotton
- Sterile and non-sterile

Double sterile packed, with safety thread

Art.-No.	Length (cm)	Description	Packaging (pieces/box)
35003	6		25 x 10
35004	13		25 x 10
35005	8	special length	25 x 10
35012	13		25 x 6
35094	13	24 threads	25 x 10
35098	8	punched latex cover	25 x 6
35104	6	24 threads	25 x 10
35111	9	special length	25 x 5
35225	3		25 x 10

Double sterile packed, without safety thread

Art.-No.	Length (cm)	Description	Packaging (pieces/box)
35013	13		25 x 10
35014	8		25 x 10
35025	20		25 x 5
35047	20		25 x 10
35093	6	24 threads	25 x 10
35141	13	twisted, with record card	25 x 10

Non-sterile, with safety thread

Art.-No.	Length (cm)	Packaging (pieces/box)
50170	6.0	250
50177	8.0	250
50223	3.0	250
50224	4.5	250
50225	10.0	250
50235	13.0	250

Non-sterile, without safety thread

Art.-No.	Length (cm)	Packaging (pieces/box)
50180	6	250
50178	8	250
50230	13	250
50232	20	250

More types and sizes on request!



Looped gauze pledget



Advantages:

- All products with x-ray contrast strips (except 50371 and 50373)
- Made of cotton
- Sterile and non-sterile

With thread, double sterile packed

Art.-No.	Size	Dimension (cm)	Packaging (pieces/box)
35027	plum-sized, 30 cm thread	2.0 x 2.0	25 x 3
35506	plum-sized, 30 cm thread	2.0 x 2.0	25 x 4
35097	plum-sized, 38 cm thread	2.0 x 2.0	25 x 3
35103	egg-sized, 30 cm thread	2.5 x 2.5	25 x 3
35198	egg-sized, 30 cm thread	2.5 x 2.5	25 x 5

Without thread, non-sterile

Art.-No.	Size	Dimension (cm)	Packaging (pieces/box)
50371	walnut-sized	1.2 x 1.2	250
50373	large	1.5 x 1.5	250

With thread, non-sterile

Art.-No.	Size	Dimension (cm)	Packaging (pieces/box)
50161	plum-sized	2.0 x 2.0	250
50254	egg-sized	2.5 x 2.5	250
50279	XL	3.0 x 3.0	250



Preparation swab

With thread, with x-ray contrast strips, non-sterile

Art.-No.	Dimensions (cm)	Packaging (pieces/box)
50248	6 x 6	250
50249	10 x 10	250

More types and sizes on request!

Sterile Covers

- **For Microscopes**
- For Mobile X-Ray Units (C-Arm/O-Arm)
- For Cameras and Consoles

Sterile Covers

Microscopes

Sterile Covers

Description:

- Standard version = ends with F
- High Quality = ends with H
- Enforced lensering = ends with HX

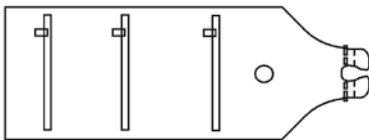
Further specifications can be found in the individual product descriptions:

- Material: Polyethylene
- Lens: Acrylic glass or glass
- Perfect fit on the optics
- EO-sterilized

LATEX-FREE

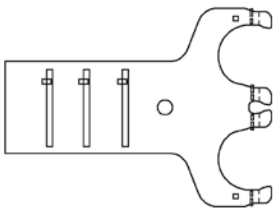
Cover versions for microscopes:

A



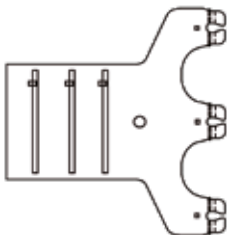
**Without observer tubes
or other accessories**

B



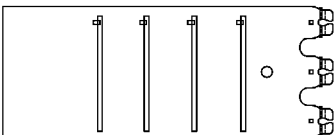
**With extended monocular
observer tubes**

C



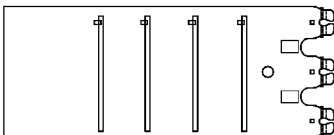
**With binocular
observer tubes**

D



**With binocular
observer tubes**

E



**With binocular observer tubes
and handgrips**



Microscopes Covers with acrylic glass lens

For Zeiss or Möller-Wedel microscopes

Art.-No.	Dimensions (cm)	Lens-Ø (mm)	Shape	Description	Packaging (pieces/box)
2548020F	50 x 155	48.0	A		10
2548030F	125 x 67 x 155	48.0	B		10
2548040F	135 x 80 x 155	48.0	C		10
2548050F	115 x 180	48.0	D		10
2548070F	115 x 260	48.0	D		10
2548090H	115 x 210	48.0	D		10
2565020H	115 x 180	65.0	D		10
2565030H	115 x 260	65.0	D		10
2565030HG	115 x 260	65.0	D	angled lens	10
2565030HX	115 x 260	65.0	D	enforced lensering	10
2565035H	120 x 260	65.0	E with handgrips		10
2565040H	115 x 300	65.0	D		10
2565040HG	115 x 300	65.0	D	angled lens	10
2565050H	115 x 210	65.0	D		10
2565060F	135 x 80 x 155	65.0	C		10
2565070F	50 x 160	65.0	A		10
2565080H	125 x 67 x 155	65.0	B		10
2565090H	137 x 260	65.0	D		5
2565100H	137 x 380	65.0	D		5
2565120F	50	65.0	cap-shaped		10
2565120FXL	130	65.0	cap-shaped		10
2500010	universal (35 x 14)		with handgrips		20

For Leica microscopes

2500110H	115 x 180	70.0	D	angled lens	10
2500120H	115 x 260	70.0	D	angled lens	10
2500130H	137 x 265	70.0	D	angled lens	5
2500140H	115 x 300	70.0	D	angled lens	10
2500140F	115 x 300	70.0	D		10
2500150H	137 x 380	70.0	D		5
2510110H	115 x 300	87.5	D	for Leica M680	5



Sterile Covers
For Microscopes

Microscope Covers with Glass Lens

The requirements for the covers are not only simple handling and fast installation. The main requirements are high optical quality and light transmission of the lens. The glass lens is the most important interface between the site and the observer's eye.

Advantages:

- Excellent optical quality
- No image distortion when zooming
- Ideal price-performance ratio



straight glass lens

Covers for Carl Zeiss and Möller-Wedel microscopes

Art.-No.	Dimensions (cm)	Lens-Ø (mm)	Packaging (pieces/box)
2565030GL	115 x 260	65	10
2565035GL*	120 x 260	65	10
2565040GL	115 x 300	65	10
2565090GL	137 x 260	65	5
2565100GL	137 x 380	65	5

* with grips



angled glass lens

Cover for Leica microscope

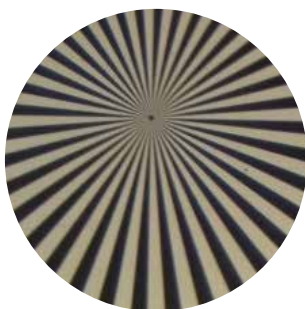
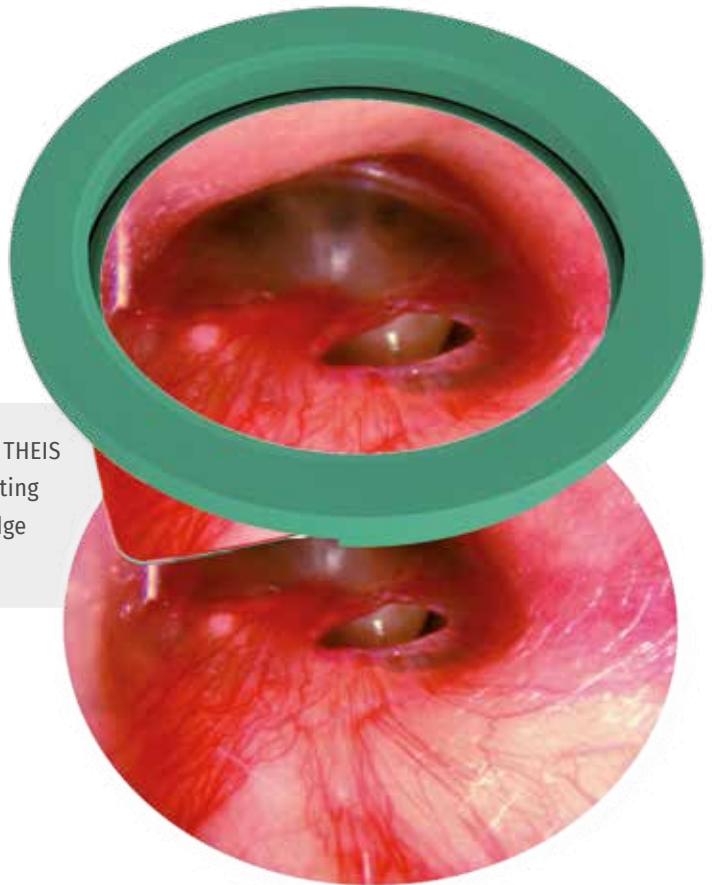
Art.-No.	Dimensions (cm)	Lens-Ø (mm)	Packaging (pieces/box)
2500130GL	137 x 265	70	5



Quality comparison of drape protective glass

Laboratory experiments have shown that glass lenses reproduce the high quality of the microscope lens, even when zooming in and out, without unwanted distortion of the field of vision.

Laboratory experiments have shown, that the SPIGGLE & THEIS glass lenses meet the highest requirements of the operating room and do not lead to image distortion, even at the edge of the intraoperative field of vision.



Optic with glass lens

Examination with Siemens star:

The Siemens star is a pattern used to test the optical quality of lenses. The focus is on the sharpness of the optical reproduction quality.

Sterile Covers

- For Microscopes
- **For Mobile X-Ray Units (C-Arm/O-Arm)**
- For Cameras and Consoles

Sterile Covers

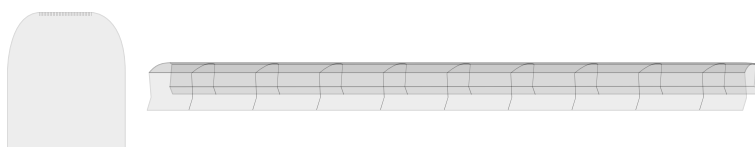
Mobile X-Ray Units (C-Arm/O-Arm)

Sterile covers for mobile x-ray units (C-Arm/O-Arm)

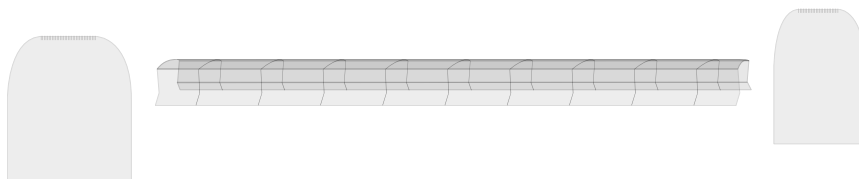
Description:

- Material: Polyethylene
- One-piece universal covers as well as two- and three-piece covers for specific systems
- All two- and three-piece covers with special clip system to drape the c-shape
- Patented clip system allows easy movement and adjustment of the c-arm whilst draped (retaining sterility)
- Latex free

A



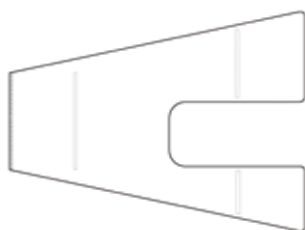
B



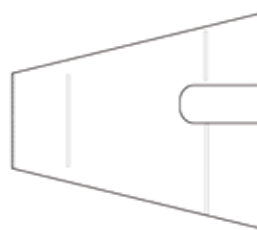
D



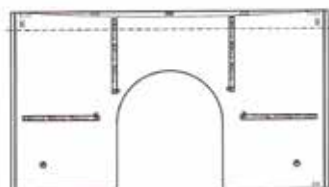
E



F



G



H



Sterile Covers

Mobile X-Ray Units (C-Arm/O-Arm)

Sterile covers for mobile x-ray units (C-Arm/O-Arm)

Art.-No.	Dimensions (cm)	Description	Shape	Feature	Packaging (pieces/box)
Universal					
2900110	115 x 240	universal	D	one-piece	10
2900200	150 x 260	universal, curved shape	G	one-piece	10
2900300	190 x 105	universal, holding bands	D	one-piece	10
2900500	90 x 210	universal, 2 strips	D	one-piece	10
Siemens					
2900502	210 x 16 x 14*	for Siremobile 2000	A	two-piece	4
2900503	210 x 16 x 14*	for Siremobile 2000 / ISO-C / 3D Arcadis Orbic	B	three-piece	4
Ziehm					
2900602	170 x 13 x 9*	for Ziehm CB7D	A	two-piece	5
2900603	170 x 13 x 9*	for Ziehm CB7D	B	three-piece	5
2900910	210 x 16 x 14*	for C-clip Siremobile 2000 / Ziehm Vista / Libra-C	B	three-piece	10
GE					
2900820	105 x 220	for x-ray unit, Mini / OEC 6600	H	one-piece	4
2900821	137 x 175	for x-ray unit, Mini / OEC 6800 / Othoscan	E	one-piece	4
2900930	210 x 16 x 14	for GE 9800	B	three-piece	4
Philips					
2900703	190 x 13 x 11*	for Philips BV/29	B	three-piece	4
2900712	190 x 13 x 11*	for Philips BV/25 / BV 29 / Libra-6	A	two-piece	4
Medtronic					
2901000	140 x 480	for Medtronic O-Arm-Surgical 3	D		4

* Dimension L x W x H of clip/tube system



Sterile Covers

- For Microscopes
- For Mobile X-Ray Units (C-Arm/O-Arm)
- **For Cameras and Consoles**

Sterile Covers

Cameras and Cables

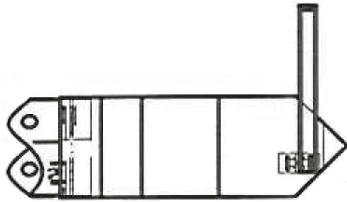
Sterile Covers for cameras and cables



Advantages

- Material: Polyethylene
- One-piece, type-specific covers

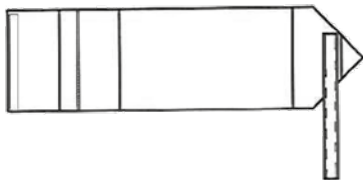
A



- 13 x 259 cm
- For cameras
- Telescopically folded, with insertion aid
- 50 pieces/box

2800050

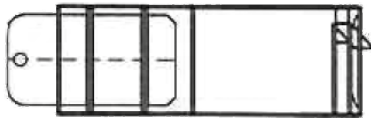
B



- 15 x 250 cm
- For cameras
- Telescopically folded, with insertion aid
- 20 pieces/box

2800060

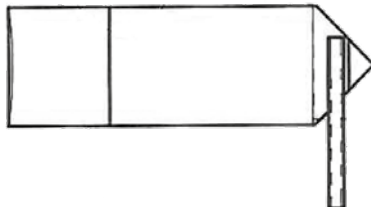
C



- 8 x 150 cm
- For drill cable cover
- 30 pieces/box

2800070

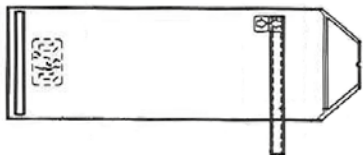
D



- 15 x 240 cm
- For cameras
- Without insertion aid
- 20 pieces/box

2800090

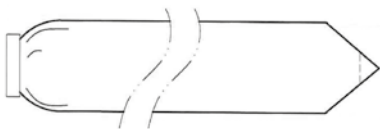
E



- 17,5 x 240 cm
- For cameras, deluxe version
- 20 pieces/box

2800100

F



- 16 x 254 cm
- For cameras
- Ring drape
- 15 pieces/box

2800110

G



- 15 x 250 cm
- For cameras
- With clutch
- 10 pieces/box

2800270

- 18 x 246 cm
- For camera systems
- With coupling
- 40 pieces/box

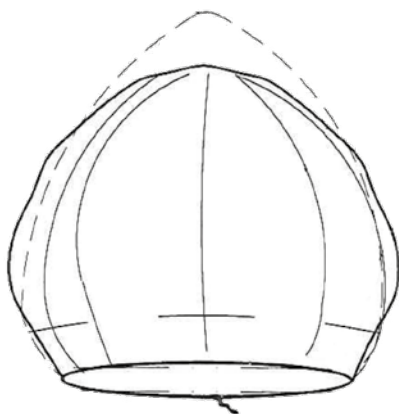
DCC 8007



Sterile Covers for consoles



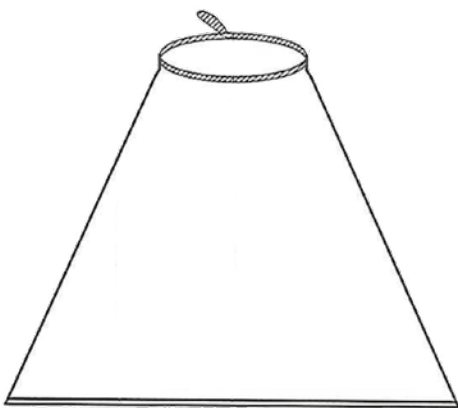
- Advantages**
- Material: Polyethylene
 - One-piece, type-specific covers



Sterile covers for consoles

- Round shape
- Double stitched, strong elastic band

Art.-No.	Dimension (cm)	Packaging (pieces/box)
2700001	40 x 45	20
2700011	42 x 50	20
2700021	60 x 50	20
2700031	75 x 75	15



Sterile covers for console

- Box shape
- Double stitched, strong elastic band

Art.-No.	Dimension (cm)	Packaging (pieces/box)
2700041	90 x 75	20
2700051	120 x 110	15
2700061	75 x 75	20
2700071	75 x 90	20
2700081	80 x 100	20



Lid Implants (Lid Chains)

- **Lid Implants and Test Weights**

Lid Implants (Lid Chains)

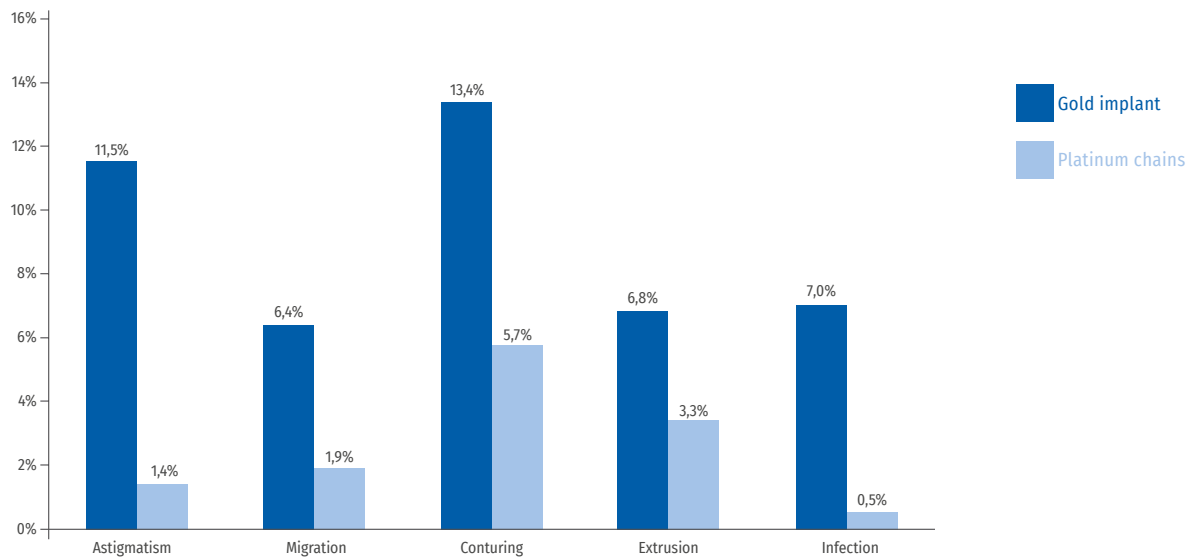
Platinum/Iridium, sterile

The Berghaus/Schrom lid chain is an implant to restore dynamic closure of the eye in cases of lagophthalmos, resulting from facial paralysis. The implants' unique design as a chain allows for an optimal and flexible adaption to the shape of the tarsus. The pre-drilled holes are for easier fixation.

Using platinum and iridium has many advantages over the commonly used gold implants, particularly when considering weight distribution and biocompatibility. The combination of the materials and the chain design is reflected in better average results and lower rate of complications.

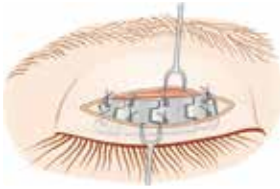


Comparison of post-operative complications of platinum chains and gold implants



Source: Development and evaluation of a lid implant for use in the surgical correction of lagophthalmos with peripheral facial paralysis, Schrom 2005.

Advantages of lid loading



Schematic diagram:
Front view of an implanted
platinum chain



Frontal view

Advantages:

- Complete closure of the eyelid
- No restriction of the peripheral vision
- Visual preservation with binocular vision
- Completely and easily reversible
- Can be combined with other surgical eyelid corrective procedures

Advantages over conventional eyelid implants



Rigid gold implant



Flexible lid chain

Vorteile:

- Flexible
- Very good tissue compatibility
- Increased density (volume reduction > 10%)
- Optimal pretarsal adaption
- Reduction in post-operative complications
- Excellent cosmetic results, high patient satisfaction and quality of life

Notes on fixation of the lid chains:

Only slow or non-absorbable suture material should be used (e.g.: 6 - 0 with P3 needle). The chain is provided with several holes for pretarsal fixation. The number of fixation points should be at least 4 (0.6g), 6 (0.8g - 1.6g) or 8 (1.8g - 2.0g). Each fixation point should be sutured individually!

Lid Implants, Platinum/Iridium, sterile

- Material: Platinum/Iridium (Pt/Ir) alloy, 97% / 3%
- Single sterile packaging

Art.-No.	Weight (g)
1500-06	0.6
1500-08	0.8
1500-10	1.0
1500-12	1.2
1500-14	1.4
1500-16	1.6
1500-18	1.8
1500-20	2.0

only on request

Art.-No.	Weight (g)
1500-22	2.2

Lid Implants (Lid Chains)

Test weights

Test weights, non-sterile

Weights are offered from 0.6 g to 2.2 g in 0.2 g increments. The appropriate weight is determined by preoperative fitting. For this

purpose, test weights are used, which are glued to the upper lid to determine a sufficient lid closure.



Test weights



Art.-No.	Description	Weight (g)	Packaging (pieces/box)
1500-PG06	test weight	0.6	1
1500-PG08	test weight	0.8	1
1500-PG10	test weight	1.0	1
1500-PG12	test weight	1.2	1
1500-PG14	test weight	1.4	1
1500-PG16	test weight	1.6	1
1500-PG18	test weight	1.8	1
1500-PG20	test weight	2.0	1
1500-PGKS	adhesive strips		50
1500-PGSET	test weight set		8

optional / not included in set:

1500-PG22	test weight	2.2	1
-----------	-------------	-----	---



Miscellaneous Products

- **Silicone Sheeting, Suction Tubes, Headband, Cotton Wool Balls, Expanding Wipe**
- VoicInject®
- APrevent® VOIS
- Trachealator
- MENTIO - Single-use Instruments

Miscellaneous Products

Silicone Sheeting and Suction Tubes

Silicone Sheeting, non-sterile

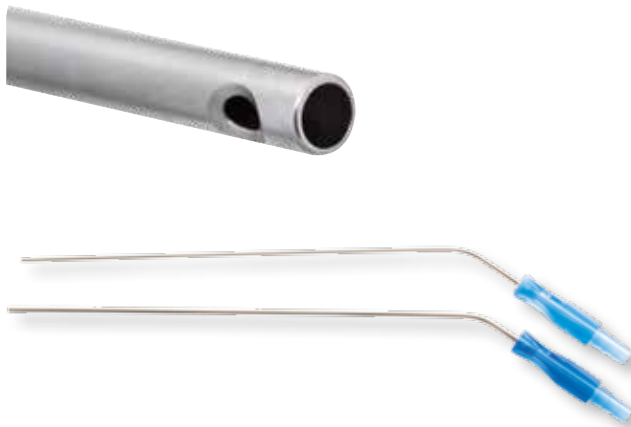
This medical grade silicone sheet is used during surgery or pathological examinations as a suture underlay, and for (mechanical) fixation and preparation of tissue. The sheets are individually packed and non-sterile when delivered.



Due to its material, the sheet is stable enough to secure preparations with the appropriate needles e.g. cannulas and thick enough to prevent the point of the needle going through to the other side.

- Suture underlay
- For (mechanical) fixation and preparation of tissue

Art.-No.	Dimensions (mm)	Description	Packaging (pieces/box)
176B500-BSU	60 x 90 x 5	60 Shore	5



Suction tubes for laryngology, single-use

- For microlaryngoscopy (MLS)
- Suction control
- Angled stainless steel cannulas
- Atraumatic (rounded) cannula tip
- Push-on Luer connector made of blue plastic
- Distal opening (suction protection)
- Single, sterile packaging

Art.-No.	Length (mm)	Diameter (mm)	Packaging (pieces/box)
3025020	250	2	10
3025030	250	3	10

**Please call +49 (0) 2206 / 90 81 11 to learn more about our customized OR-Sets.
(Minimum order: 150 sets)**



Miscellaneous Products

Headband, Cotton Wool Balls etc.



Expanding wipe, PVA

- Expanding cleaning pad
- Single, sterile packaging

Art.-No.	Dimension (mm)	Packaging (pieces/box)
66500	82 x 82	20



Headband, PVA

- Expanding headband for surgical staff
- Sweat absorbing
- Single, sterile packaging

Art.-No.	Dimension (mm)	Packaging (pieces/box)
66510	200 x 40	20



Dressing cotton wool

- Pure cotton
- Single, sterile packaging

Art.-No.	Description	Packaging (pieces/box)
35224	1 g, round	25



Tampon strips, with x-ray strip

- X-ray strip
- 4-ply
- Pre-washed
- Single, sterile packaging

Art.-No.	Dimension (mm)	Packaging (pieces/box)
35099	50 x 1	25



Miscellaneous Products

Anti-fog



Ultra-Stop anti-fog solution

Art.-No.	Description
30-160-01	25 ml pipette bottle, non-sterile
30-160-02	30 ml pierce bottle, sterile
30-160-03	15 ml spray bottle, non-sterile



Anti-fog solution kit

Sterile, 48 pieces/box
30-160-05



Miscellaneous Products

- Silicone Sheeting, Suction Tubes, Headband, Cotton Wool Balls, Instrument Wipe
- **VoiceInject®**
- APrevent® VOIS
- Trachealator
- MENTIO - Single-use Instruments



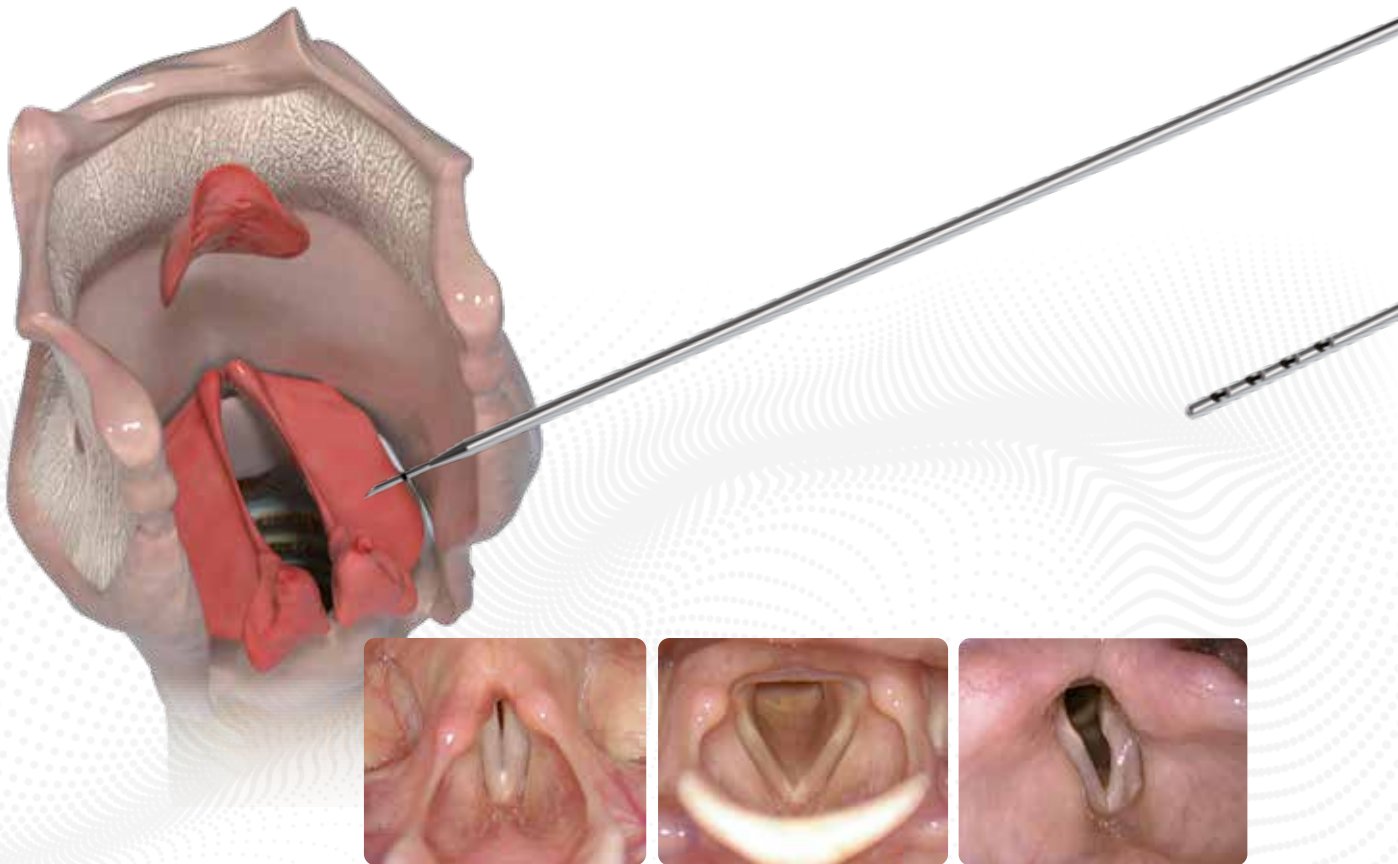
Prof. Dr. Markus M. Hess
MEDICAL VOICE CENTER, Hamburg, Germany

» Autologous fat tissue is unique because it is a combination of a resorbable and a permanent component. «

Vocal fold augmentation is a safe and effective treatment method to improve vocal quality when the glottis does not close completely. Patients appreciate the use of endogenous material, such as autologous fat. Autologous fat demonstrates good elastic properties and is fully biocompatible. Augmentation can be performed bilaterally on vocal folds.

Medical indications:

- Presbyphonia
- Scarring
- Chordectomy
- Vocal fold atrophy
- Recurrent nerve paresis



Closed vocal fold

Opened vocal fold

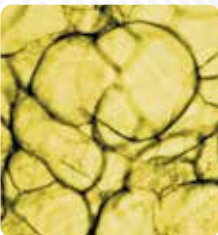
Unilateral vocal fold palsy

Source: MEDICAL VOICE CENTER



Benefits:

- Autologous fat for optimal biocompatibility
- No injection of synthetic material
- Minimally invasive treatment with maximum patient comfort
- Injection and harvesting cannula designed for optimal application and protection of the harvested fat cells
- Sterile system



Ideal filler for use in the human body

- Biocompatible autologous tissue
- Easily harvested
- Long term benefit

Human fat cells

Miscellaneous Products

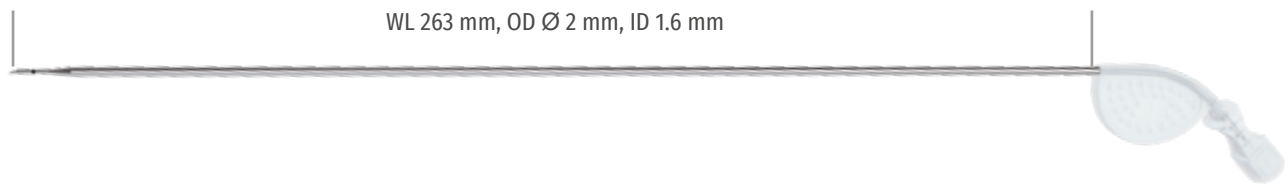
VoiceInject®

Injection Needle

Special attention has been given to the **careful transport** and **injection** of fat cells into the vocal folds. Thanks to the high-volume design and extra thin cannula wall, **VoiceInject®** makes it easy to inject fat cells without damaging them.

Properties

- High-volume lumen to protect the harvested fat cells
- Facet cut for simple and safe injection into the vocal fold
- Optimal length for transoral injection, working length 263 mm, overall length 332 mm
- Needle tip: 8 mm with marking of the injection depth at 5 mm
- Removable handle
- Luer Lock connector



VoiceInject®

Injection needle, 1 piece

3080-1000-01

VoiceInject®

Injection needle, 5 pieces

3080-1005

VoiceInject®-Set

- consists of **VoiceInject®**-Injection needle and **Lipo Harvesting-Set**

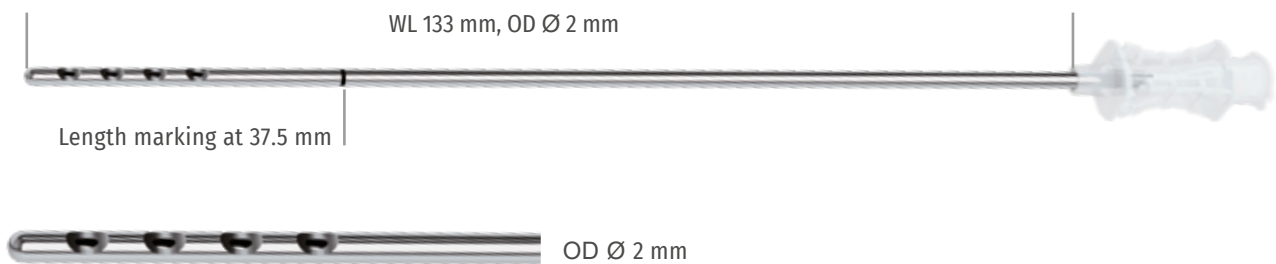
3080-Set1

Lipo Harvesting Cannula

Careful harvesting is crucial to ensure **successful** and **longer lasting autologous fat augmentation** in the vocal folds. In addition to a low level of negative pressure when harvesting, the special shape, arrangement and cut of the suction holes ensure safe harvesting of the fat cells. Once harvested, the cannula tube provides the fat cells with enough space, so that they can be drawn up into the syringe, **without higher pressure**.

Properties

- Atraumatic beveled suction holes on the cannula tip
- Low suction pressure, thanks to manually build-up pressure
- Special arrangement of the suction holes
- Harvesting cannula with large-volume inner shaft
- Length marking at 37.5 mm



Atraumatic beveled suction holes

The Lipo Harvesting Cannula is only available as a component of the **Lipo Harvesting-Set**.



Lipo Harvesting-Set

- 1x lipo harvesting cannula
- 1x 14G cannula
- 4x 10 ml syringes
- 4x 1 ml syringes
- 1x Discofix® C (connector for fat transfer)
- 4x Luer Lock plugs
- 4x push-in stoppers

3080-0100

Miscellaneous Products

VoiceInject®



Benchtop Centrifuge

- 6-fold swing-out motor
- 6 tubes
- Small and light weight
- 200-240V/50-60Hz

2300EBA270 *

* Please contact your local SPIGGLE & THEIS representative for further information

Miscellaneous Products

- Silicone Sheeting, Suction Tubes, Headband, Cotton Wool Balls, Instrument Wipe
- VoicInject®
- **APrevent® VOIS**
- Trachealator
- MENTIO - Single-use Instruments

Miscellaneous Products

APrevent® VOIS

With the APrevent® VOIS implant we offer you one highly standardized surgical technique as part of a type I thyroplasty.

Utilizing the APrevent® VOIS implant for type I thyroplasty is the new route to treat glottal insufficiency and improve voice quality. The highly standardized surgical procedure with the APrevent® VOIS implant significantly shortens the operating time. The patient's voice quality can be addressed through different implant sizes, including the possibility of post-operative implant adjustment.

In addition, any unnecessary revision operations can be avoided. Compared to existing surgical techniques, you save up to 40 minutes of operating time per patient. Among other things, this is achieved by the vector-specific expansion of the tip of the silicone pad mediodorsally directly to the arytenoid cartilage. Any necessary arytenoid adduction as an additional operation is eliminated.

VOIS - Vocal Implant System

minimally invasive · safe · fast

Benefits

- **Complete glottal closure:**
Vector specific silicone cushion expansion in direction mediodorsal
- **Biocompatible materials:**
Titanium and medical soft silicone have proven themselves as good materials for implants for decades
- **Minimally invasive:**
Shorter operation time with reduced risk of complications
Procedure possible under full and partial anesthesia

Sliding thread

Fastening screw

Screw fixation instead of thread fixation

Mounting plate

Secure fixation of the implant on the thyroid cartilage





Before adjustment



After adjustment



Port membrane

Intra- and postoperative adjustment

Titanium case

With integrated port chamber

4 standard sizes

XS, S, M and L (additional intermediate sizes available)

Soft silicone

Vector-specific expansion for the entire glottic closure

Miscellaneous Products

APrevent® VOIS

In order to meet the different anatomical conditions of patients, the VOIS implant is available in four standard sizes and four intermediate sizes. The standard sizes differ in terms of the

dimensions of the silicone cushion and the intermediate sizes differ in terms of the titanium base body.



VOIS, XSmall, sterile, 1 box

- Maximum filling volume: 0.17 ml
- Dimensions of the silicone cushion: 7 x 9 mm

Art.-No.	Name	Anterior flange (mm)
APV001	VOIS-XS	2,5
APV008	VOIS-XS_3.0*	3,0

*Intermediate size



VOIS, Small, sterile, 1 box

- Maximum filling volume: 0.25 ml
- Dimensions of the silicone cushion: 8 x 11 mm

Art.-No.	Name	Anterior flange (mm)
APV002	VOIS-S	2,5
APV009	VOIS-S_3.0*	3,0

*Intermediate size





VOIS, medium, sterile, 1 box

- Maximum filling volume: 0.30 ml
- Dimensions of the silicone cushion: 8 x 15 mm

Art.-No.	Name	Anterior flange (mm)
APV003	VOIS-M	3,0
APV010	VOIS-M_3.5*	3,5

*Intermediate size



VOIS, Large, sterile, 1 box

- Maximum filling volume: 0.30 ml
- Dimensions of the silicone cushion: 8 x 18 mm

Art.-No.	Name	Anterior flange (mm)
APV004	VOIS-L	3,0
APV011	VOIS-L_3.5*	3,5

*Intermediate size

Benefits

- **Size selection:** A total of four standard sizes and four intermediate sizes to accommodate anatomical requirements
- **Adjustability:** Individual adjustment with optimal results through intra- and postoperative adjustment of the size of the silicone cushion
- **Complete closure:** Vector-specific silicone cushion expansion ensures complete glottic closure

Miscellaneous Products

APrevent® VOIS

The 16-piece APrevent® VOIS instrument set has been specially developed for type I thyroplasty with the patented VOIS implant. The instruments (APT101-APT116) are in a reusable sterilization tray and are delivered non-sterile.

With the specially developed instrument set you can achieve a high level of standardization of surgical technology. This results in a short learning curve for the surgeon, reproducible results and a reduction in peri- and postoperative complications.

Instrument set*, non-sterile

APT100

1x Instrument tray

16x Instruments



*Reusable and autoclavable

Benefits

- **Highly standardized procedure:** The instruments, which are tailored to the surgical technique, allow the surgeon to precisely orient and position the specific implant window. Additionally, standardization allows for a shorter learning curve.
- **Window size check:** During the operation, verify the exact size of the thyroplasty window using the specially designed instruments. This leads to correct implant size selection and complete glottic closure.
- **Biologically compatible material:** Made of medical grade stainless steel and autoclavable

Product List

Art.-No.	Name	Volume (ml)	Size of the Silicone cushion (mm)	Anterior flange (mm)	Packaging
APV001	VOIS-XS	0,17	7 x 9	2,5	1 box, sterile
APV002	VOIS-S	0,25	8x 11	2,5	1 box, sterile
APV003	VOIS-M	0,30	8 x 15	3,0	1 box, sterile
APV004	VOIS-L	0,30	8 x 18	3,0	1 box, sterile
APV008	VOIS-XS_3.0*	0,17	7 x 9	3,0	1 box, sterile
APV009	VOIS-S_3.0*	0,25	8x 11	3,0	1 box, sterile
APV010	VOIS-M_3.5*	0,30	8 x 15	3,5	1 box, sterile
APV011	VOIS-L_3.5*	0,30	8 x 18	3,5	1 box, sterile
APT100	Instrument set				Includes 1 sieve 16 instruments, non-sterile

*Intermediate size

Implant sets

Art.-No.	Name	Description
SET-S1	VOIS Starter Set	4 Implants: Standard Sizes VOIS-XS, VOIS-S, VOIS-M, VOIS-L each delivered sterile, incl. full Instrument Set with Tray
SET-01	VOIS Standard IMPLANT SET	4 Implants: Standard Sizes VOIS-XS, VOIS-S, VOIS-M, VOIS-L each delivered sterile
SET-02	VOIS Professional IMPLANT SET	8 Implants consisting of: 4 Implants Standard Sizes VOIS-XS, VOIS-S, VOIS-M, VOIS-L / 4 Implants Intermediate Sizes: VOIS-XS 3.0, VOIS-S 3.0, VOIS-M 3.5, VOIS-L 3.5, each delivered sterile
SET-03	VOIS Professional IMPLANT SET including 1 complete Instrument set with tray	8 Implants consisting of: 4 Implants Standard Sizes: VOIS-XS, VOIS-S, VOIS-M, VOIS-L / 4 Implants Intermediate Sizes: VOIS-XS 3.0, VOIS-S 3.0, VOIS-M 3.5, VOIS L 3.5, each delivered sterile, incl. 1 full Instrument Set with Tray



Miscellaneous Products

- Silicone Sheeting, Suction Tubes, Headband, Cotton Wool Balls, Instrument Wipe
- VoicInject®
- APrevent® VOIS
- **Trachealator**
- MENTIO - Single-use Instruments

Miscellaneous Products

Trachealator

Safe and gentle airway stenosis dilation allowing continuous ventilation

Our new trachealator allows full ventilation during the dilatation thanks to its multi balloon design. Take the time you need to perform the treatment optimally whilst supplying your patient with sufficient oxygen. The Trachealator is a specially developed dilatation catheter which, thanks to its unique design, allows for prolonged and, above all, gentle treatment of tracheal stenosis.



deflated



inflated

- Dilatation of airway stenosis with simultaneous ventilation
- Multiple dilatations possible
- Suitable for jet insufflation
- No limitation of dilatation time

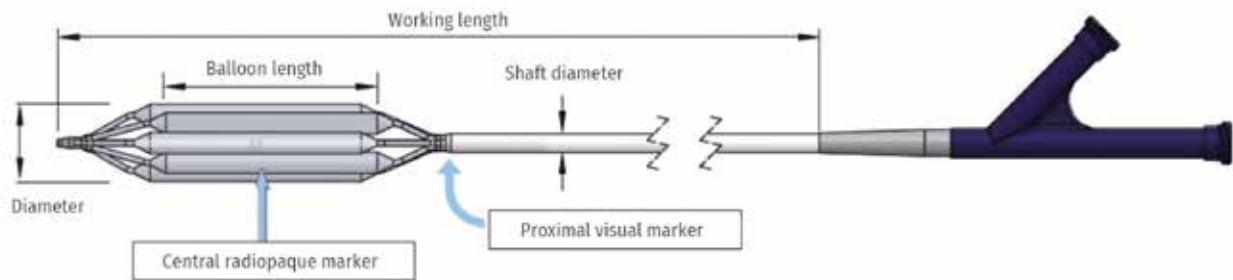
- Total length 650 mm
- Available in different sizes
- Individually sterile packed
- Central guide wire



Scan QR code
to watch video

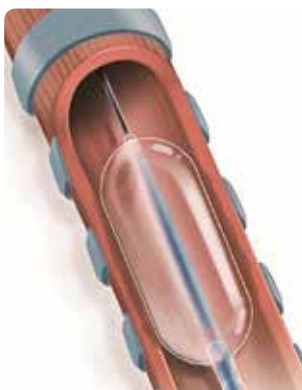


Trachealator



Trachealator, AL 650 mm, 1 piece

Art.-No.	Balloon dimensions (mm)	Nominal pressure (atm)	Burst pressure (atm)	Shaft diameter (mm)	Guide wire (mm)
TRD1-06030	6 x 30	6	12	2,3	0.46
TRD1-07030	7 x 30	6	12	2,3	0.46
TRD1-08030	8 x 30	6	12	2,3	0.46
TRD1-09030	9 x 30	6	12	2,3	0.46
TRD1-10030	10 x 30	6	12	2,3	0.46
TRD1-12040	12 x 40	6	12	2,3	0.46
TRD1-14540	14.5 x 40	6	12	3,5	0.89
TRD1-16040	16 x 40	6	12	3,5	0.89
TRD1-18040	18 x 40	6	12	3,5	0.89



Conventional dilatation balloon catheters completely occlude the airway



Catheter is placed across stenosis while in folded condition



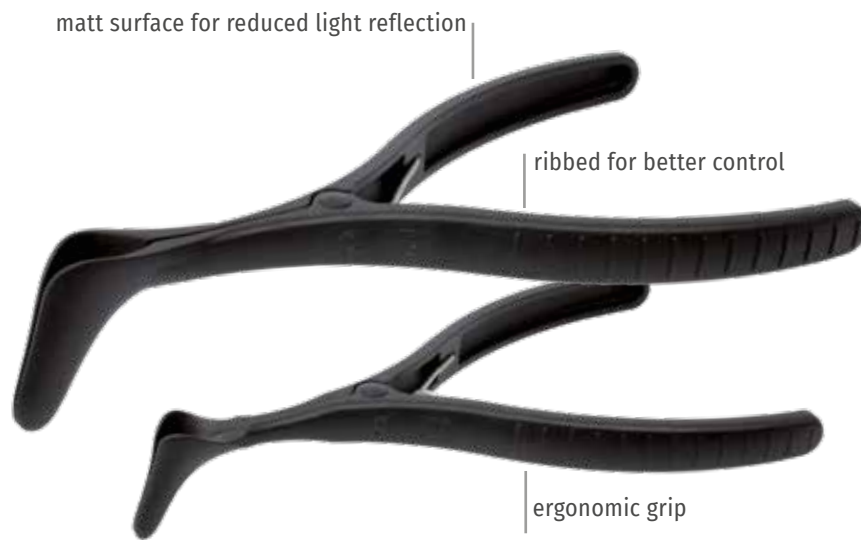
The trachealator catheter allows simultaneous ventilation during dilatation

Miscellaneous Products

- Silicone Sheeting, Suction Tubes, Headband, Cotton Wool Balls, Instrument Wipe
- VoicInject®
- APrevent® VOIS
- Trachealator
- **MENTIO - Single-use Instruments**

Miscellaneous Products

MENTIO



Nasal speculum according to Hartmann

Large

- blade length 3.2 cm
- total length 15.8 cm
- polyamide
- 25 pieces per box

5002002

Small

- blade length 2.6 cm
- total length 14.5 cm
- polyamide
- 25 pieces per box

5002001



Cerumen hook

- Hook size 0.3 cm
- Total length 13.5 cm
- Carbon fiber filled nylon
- 100 pieces per box

5001007



Ear curette / Cotton carrier

Combination instrument with round loop and cotton wool carrier

- length cotton wool carrier 1.1 cm
- total length 15 cm
- carbon fiber filled nylon
- 100 pieces per box

5001008





Ear speculum according to Hartmann

- Matt inner surface
- Holding ring
- Polypropylene
- 200 pieces per box

Art.No.	Type/Size	ID (mm)	OD (mm)
5001001	0	2.1	3.4
5001002	1	3.2	4.5
5001003	2	4.0	5.3
5001004	3	5.2	6.5
5001005	4	6.5	7.8



Acrylic Dispenser

- Dispenser for disposable ear specula
- 5 compartments, 0.3 cm acrylic glass
- Labeled inserts (size 0-4)

5001000



Spatula, birch wood

- 15 cm
- 100 pieces per box

98-11-402



