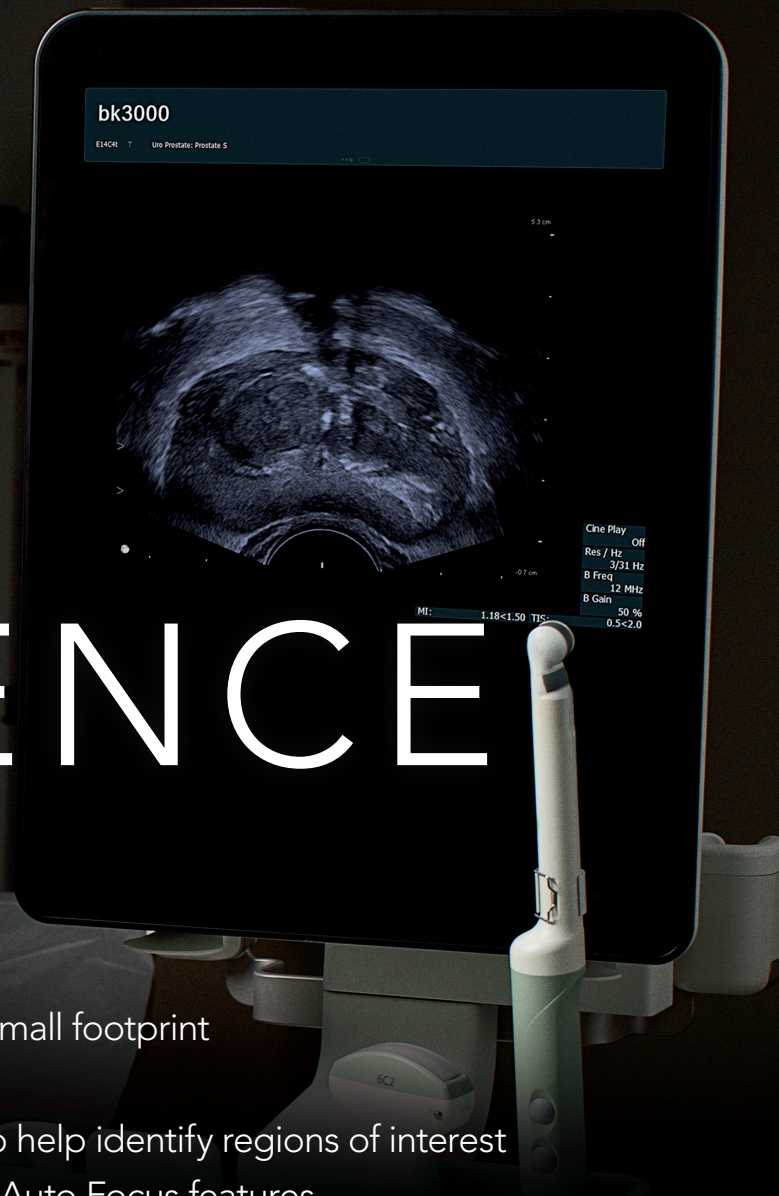


SEE DETAILS

THAT MAKE

THE DIFFERENCE



- Dedicated urology ultrasound system with a simple workflow and small footprint
- Wide range of sterilizable urology transducers
- Advanced modes, including Elastography and Contrast Imaging, to help identify regions of interest
- Immediate, auto-optimized imaging using No-touch Autogain and Auto Focus features

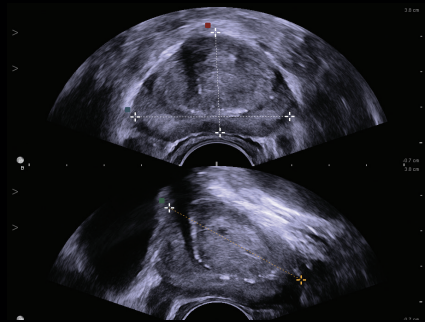
bk 
medical

as specialized as you

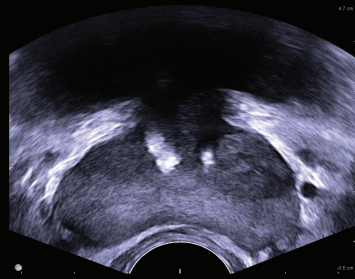
UNPARALLELED IMAGING TO GUIDE YOUR PROCEDURES

High-resolution images with superb anatomical details are enabled by faster processing, advanced auto-optimization algorithms, and BK's high performance transducers.

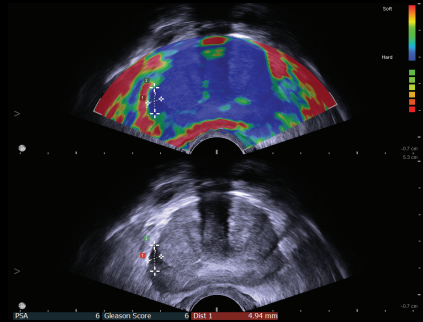
TRANSRECTAL PROSTATE BIOPSY



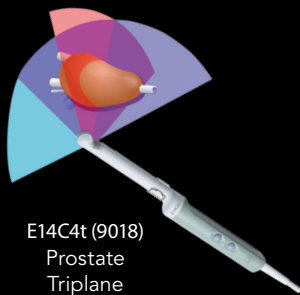
Prostate volume measurement
biplane imaging
E14C4t transducer



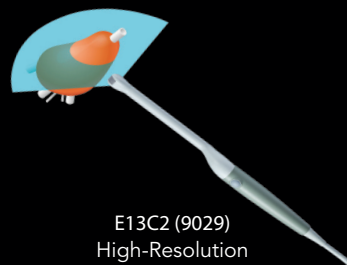
Transverse prostate with
left-side lesion
E10C4 transducer



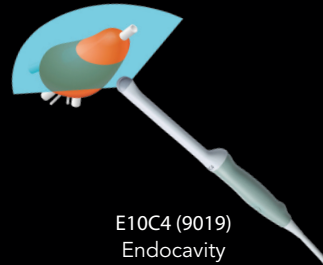
Elastography of the prostate
E14C4t transducer



E14C4t (9018)
Prostate
Triplane



E13C2 (9029)
High-Resolution
Endfire

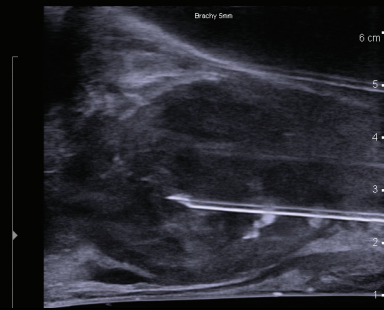


E10C4 (9019)
Endocavity

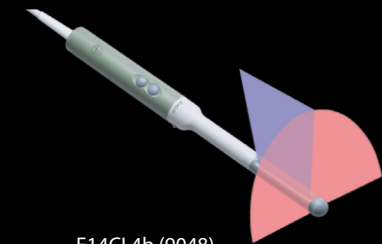
The unique triplane transducer incorporates sidefire imaging to help improve biopsy precision, and endfire imaging to help improve access to the apical part of the prostate.

Superb images with high spatial, temporal and contrast resolution help you to quickly identify lesions and perform targeted biopsies.

TRANSPERINEAL PROSTATE BIOPSY/ GUIDING THERAPY



Prostate during brachytherapy - sagittal
E14CL4b transducer



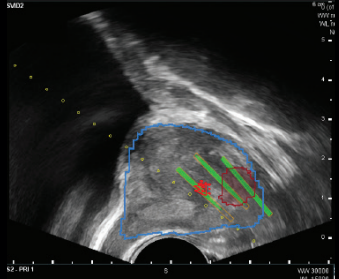
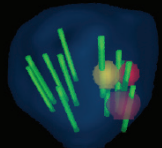
E14CL4b (9048)
Endocavity Biplane

The slim linear and transverse arrays enable visualization of large prostates.


Expanded Mode overlaps the long, linear sagittal and transverse planes, allowing you to see more while reducing the need for transducer readjustment.

The E14CL4b is superb for ultrasound-guided treatments such as brachytherapy.


FUSION


bkFusion
Biopsy of region of interest
E14C4t transducer



E14C4t (9018)
Prostate
Triplane



E14CL4b (9048)
Endocavity
Biplane



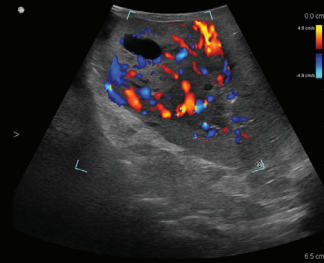
E13C2 (9029)
High resolution
Endfire

One integrated system with a minimal footprint.


Simple, guided workflow that follows your familiar biopsy procedure.

Reduce registration errors and procedure steps with Predictive Fusion.


ROBOTIC-ASSISTED



Renal mass with color Doppler
X12C4 Drop-In transducer



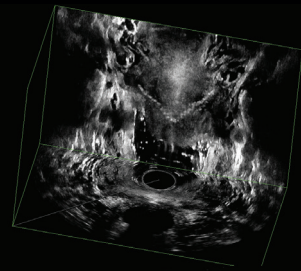
X12C4 (9026)¹
Robotic Drop-In




I12C4f (9066)¹
4-way Laparoscopic

The Drop-In transducer enables real-time visualization of complex organs and difficult-to-access anatomy.


UROGYNECOLOGY




3D cube - TVT sling
X14L4 transducer



X14L4 (9038)
Endocavity 3D



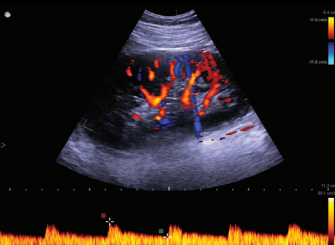
20R3 (9052)
Endocavity 3D




9C2 (9002)
Curved

You can visualize the vascularity of the anal canal and surrounding structures, as well as explore the integrity and position of tapes and meshes, pre- and post-operatively.


KIDNEY/BLADDER




Right kidney resistive index measurement 6C2s transducer




5C1e (9085)
Curved



6C2 (9040)
Curved



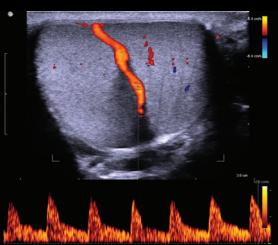
9C2 (9002)
Curved




6C2s (9023)
Small Curved

Curved array transducers provide optimal image quality for advanced abdominal kidney imaging, measurement, and biopsy.


PENILE/TESTES




Testicular artery - PW Doppler
18L5 transducer




18L5s (9081)
Small
High-Frequency
Linear




13L4w (9011)
Wide Linear



8L2 (9032)
Linear



14L3 (9051)
Linear



18L5 (9070)
High-Frequency
Linear

Sensitive color Doppler helps visualize blood flow in the testes and penile arteries, while spectral Doppler helps examine and quantify blood flow.

¹ X12C4 and I12C4f are only compatible with bk5000.

DEDICATED UROLOGY ULTRASOUND SOLUTION

DESIGNED FOR UROLOGY

- A small footprint for a variety of clinical settings.
- Sensitive color Doppler provides excellent real-time visualization of vascular perfusion.
- Advanced imaging modes, including elastography and contrast imaging, help identify regions of interest.
- Rapid boot time and up to two hours of plug-free imaging.
- Sterilizable remote control for control of the system in the sterile field.



bk3000/bk5000

FULLY STERILIZABLE, DEDICATED UROLOGY TRANSDUCERS

- Ergonomically designed for a secure and comfortable grip.
- Long transducer cables improve flexibility in the OR or clinic.
- Most transducers on the bk3000/bk5000 feature a Smart™ button that enables you to activate the transducer, freeze, store or print images at the press of a button.



A selection of BK Medical's specialized transducers

SINGLE-USE NEEDLE GUIDES

- Single-use needle guides help you perform reliable puncture and biopsy procedures quickly.



Simultaneous Biplane single-use needle guide



Endfire single-use needle guide



Dual single-use needle guide

A selection of BK Medical single-use needle guides

BK Medical
8 Centennial Drive
Peabody
MA 01960
USA
T +1 978 326 1300
bkmedical.com

North America
Sales & Service
BK Medical
8 Centennial Drive
Peabody, MA 01960
USA
T +1 978 326 1300
F +1 978 326 1399
bkmedical.com

Europe and Rest of World
Sales, Service & Design Center
BK Medical
Mileparken 34
2730 Herlev
Denmark
T +45 4452 8100
F +45 4452 8199
bkmedical.com

bk
medical